

Adaptateurs hydrauliques

L'adaptateur est la jonction entre le composant à raccorder et la conduite hydraulique. L'adaptateur est une pièce qui permet de réaliser une jonction parfaite entre des produits ayant des implantations filetées différentes. En outre, un adaptateur permet de contourner les différences de sections de tuyaux au sein d'un système.

Les adaptateurs "coudés" peuvent être utiles pour intégrer des tuyaux dans des espaces réduits ou éviter des flexions extrêmes dans les tuyaux. (Voir le montage des assemblages flexibles dans le chapitre sur les assemblages flexibles)

Les adaptateurs en té et en croix permettent de diviser des conduites ou de les unir.

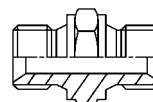
Un adaptateur constitue toujours un maillon dans le système hydraulique. C'est pourquoi, lors de la sélection, il convient de toujours vérifier que la résistance à la pression et la section sont suffisantes.

Comme la gamme d'adaptateurs Fluiconnecto permet de combiner une multitude de tailles, de filetages et de formes d'étanchéité, il est impossible de donner un aperçu général des pressions de service des adaptateurs. Le département vente de Fluiconnecto se fera un plaisir de vous renseigner à ce propos.

Fluiconnecto possède une gamme étendue d'adaptateurs en inox.

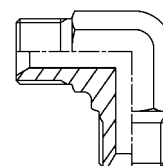
Mamelon double BSP/BSP

réf.	ext. BSP	ext. BSP
2244-02-02	1/8-28	1/8-28
2244-02-04	1/8-28	1/4-19
2244-04-04	1/4-19	1/4-19
2244-04-06	1/4-19	3/8-19
2244-04-08	1/4-19	1/2-14
2244-06-06	3/8-19	3/8-19
2244-06-08	3/8-19	1/2-14
2244-06-12	3/8-19	3/4-14
2244-08-08	1/2-14	1/2-14
2244-08-10	1/2-14	5/8-14
2244-08-12	1/2-14	3/4-14
2244-08-16	1/2-14	1-11
2244-10-10	5/8-14	5/8-14
2244-10-12	5/8-14	3/4-14
2244-12-12	3/4-14	3/4-14
2244-12-16	3/4-14	1-11
2244-16-16	1-11	1-11
2244-16-20	1-11	1 1/4-11
2244-16-24	1-11	1 1/2-11
2244-20-20	1 1/4-11	1 1/4-11
2244-20-24	1 1/4-11	1 1/2-11
2244-24-24	1 1/2-11	1 1/2-11
2244-24-32	1 1/2-11	2-11
2244-32-32	2-11	2-11



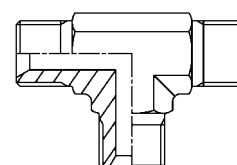
Coude BSP/BSP

réf.	ext. BSP	ext. BSP
2644-04-04	1/4-19	1/4-19
2644-04-06	1-4-19	3/8-19
2644-06-06	3/8-19	3/8-19
2644-06-08	3/8-19	1/2-14
2644-08-08	1/2-14	1/2-14
2644-08-12	1/2-14	3/4-14
2644-10-10	5/8-14	5/8-14
2644-12-12	3/4-14	3/4-14
2644-12-16	3/4-14	1-11
2644-16-16	1-11	1-11



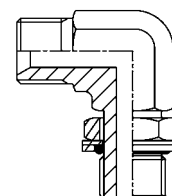
Té BSP/BSP

réf.	ext. BSP	ext. BSP	ext. BSP
2744-04-04	1/4-19	1/4-19	1/4-19
2744-06-06	3/8-19	3/8-19	3/8-19
2744-08-08	1/4-14	1/4-14	1/4-14
2744-10-10	5/8-14	5/8-14	5/8-14
2744-12-12	3/4-14	3/4-14	3/4-14
2744-16-16	1-11	1-11	1-11



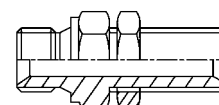
Coude 90° réglable BSP/BSP

réf.	ext. BSP	ext. BSP
2648-02-02	1/8	1/8
2648-04-04	1/4	1/4
2648-06-06	3/8	3/8
2648-08-08	1/2	1/2
2648-12-12	3/4	3/4
2648-16-16	1	1
2648-20-20	1 1/4	1 1/4
2648-24-24	1 1/2	1 1/2



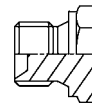
Passe-cloison BSP/BSP

réf.	ext. BSP	ext. BSP
8248-02-02	1/8	1/8
8248-04-04	1/4	1/4
8248-06-06	3/8	3/8
8248-08-08	1/2	1/2
8248-10-10	5/8	5/8
8248-12-12	3/4	3/4
8248-16-16	1	1
8248-20-20	1 1/4	1 1/4
8248-24-24	1 1/2	1 1/2



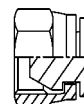
Bouchon BSP

réf.	ext. BSP
2140-02	1/8-28
2140-04	1/4-19
2140-06	3/8-19
2140-08	1/2-14
2140-10	5/8-14
2140-12	3/4-14
2140-16	1-11
2140-20	1 1/4-11
2140-24	1 1/2-11
2140-32	2-11



Capuchon aveugle BSP

réf.	int. BSP
2113-02	1/8-28
2113-04	1/4-19
2113-06	3/8-19
2113-08	1/2-14
2113-10	5/8-14
2113-12	3/4-14
2113-16	1-11
2113-20	1 1/4-11
2113-24	1 1/2-11
2113-32	2-11

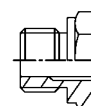


3

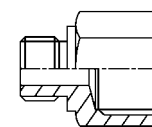
Réduction BSP/BSP

Egalement disponible avec étanchéité ED.

réf.	ext. BSP	int. BSP	type
RI1/8x3/8	1/8-28	3/8-19	II
RI1/8x1/4	1/8-28	1/4-19	II
RI1/4x3/4	1/4-19	3/4-14	II
RI1/4x1/2	1/4-19	1/2-14	II
RI1/4x3/8	1/4-19	3/8-19	II
RI1/4x1/8	1/4-19	1/8-28	II
RI3/8x3/4	3/8-19	3/4-14	II
RI3/8x1/2	3/8-19	1/2-14	II
RI3/8x1/4	3/8-19	1/4-19	II
RI3/8x1/8	3/8-19	1/8-28	I
RI1/2x11/4	1/2-14	1 1/4-11	II
RI1/2x1	1/2-14	1-11	II
RI1/2x3/4	1/2-14	3/4-14	II
RI1/2x3/8	1/2-14	3/8-19	II
RI1/2x1/4	1/2-14	1/4-19	I
RI1/2x1/8	1/2-14	1/8-28	I
RI3/8x11/2	3/4-14	1 1/2-11	II
RI3/4x11/4	3/4-14	1 1/4-11	II
RI3/4x1	3/4-14	1-11	II
RI3/4x1/2	3/4-14	1/2-14	II
RI3/4x3/8	3/4-14	3/8-19	I
RI3/4x1/4	3/4-14	1/4-19	I
RI1x11/2	1-11	1 1/2-11	II
RI1x11/4	1-11	1 1/4-11	II
RI1x3/4	1-11	3/4-14	II
RI1x1/2	1-11	1/2-14	I
RI1x3/8	1-11	3/8-19	I
RI1x1/4	1-11	1/4-19	I
RI11/4x11/2	1 1/4-11	1 1/2-11	II
RI11/4x1	1 1/4-11	1-11	II
RI11/4x3/4	1 1/4-11	3/4-14	I
RI11/4x1/2	1 1/4-11	1/2-14	I
RI11/2x11/4	1 1/2-11	1 1/4-11	II
RI11/2x1	1 1/2-11	1-11	I
RI11/2x3/4	1 1/2-11	3/4-14	I
RI11/2x1/2	1 1/2-11	1/2-14	I
RI2x3/4	2-11	3/4-14	I
RI2x1	2-11	1-11	I
RI2x11/4	2-11	1 1/4-11	I
RI2x11/2	2-11	1 1/2-11	I



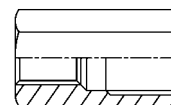
Type I



Type II

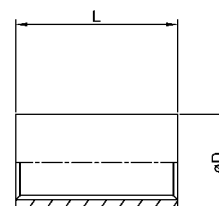
Manchon BSP/BSP

réf.	int. BSP	int. BSP
8244-02-02	1/8-28	1/8-28
8244-02-04	1/8-28	1/4-19
8244-04-04	1/4-19	1/4-19
8244-04-06	1/4-19	3/8-19
8244-06-06	3/8-19	3/8-19
8244-04-08	1/4-19	1/2-14
8244-06-08	3/8-19	1/2-14
8244-08-08	1/2-14	1/2-14
8244-08-10	1/2-14	5/8-14
8244-08-12	1/2-14	3/4-14
8244-08-16	1/2-14	1-11
8244-10-10	5/8-14	5/8-14
8244-10-12	5/8-14	3/4-14
8244-12-06	3/4-14	3/8-19
8244-12-12	3/4-14	3/4-14
8244-12-16	3/4-14	1-11
8244-16-16	1-11	1-11
8244-16-20	1-11	1 1/4-11
8244-20-20	1 1/4-11	1 1/4-11
8244-20-24	1 1/4-11	1 1/2-11
8244-24-24	1 1/2-11	1 1/2-11
8244-24-32	1 1/2-11	2-11
8244-32-32	2-11	2-11



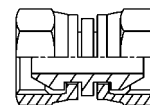
Manchon à souder lourd BSP/BSP

réf.	int. BSP	int. BSP	øD [mm]	L [mm]
8284-04-04	1/4-19	1/4-19	22	37
8284-06-06	3/8-19	3/8-19	22	38
8284-08-08	1/2-14	1/2-14	29	48
8284-12-12	3/4-14	3/4-14	35	51
8284-16-16	1-11	1-11	45	60
8284-20-20	1 1/4-11	1 1/4-11	60	67
8284-24-24	1 1/2-11	1 1/2-11	65	79
8284-32-32	2-11	2-11	76	90

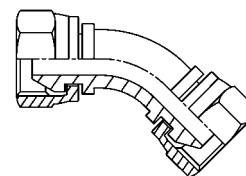


Mamelon de raccordement BSP/BSP

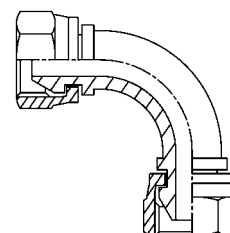
réf.	écrou de serrage BSP	écrou de serrage BSP
2213-02-02	1/8-28	1/8-28
2213-02-04	1/8-28	1/4-19
2213-04-04	1/4-19	1/4-19
2213-04-06	1/4-19	3/8-19
2213-04-08	1/4-19	1/2-14
2213-06-06	3/8-19	3/8-19
2213-06-08	3/8-19	1/2-14
2213-06-12	3/8-19	3/4-14
2213-08-08	1/2-14	1/2-14
2213-08-12	1/2-14	3/4-14
2213-08-16	1/2-14	1-11
2213-10-12	5/8-14	3/4-14
2213-08-10	1/2-14	5/8-14
2213-12-12	3/4-14	3/4-14
2213-12-16	3/4-14	1-11
2213-16-16	1-11	1-11
2213-16-20	1-11	1 1/4-11
2213-20-20	1 1/4-11	1 1/4-11

**Coude 45° BSP/BSP**

réf.	écrou de serrage BSP	écrou de serrage BSP
2813-04-04	1/4-19	1/4-19
2813-06-06	3/8-19	3/8-19
2813-08-08	1/2-14	1/2-14
2813-12-12	3/4-14	3/4-14
2813-16-16	1-11	1-11
2813-20-20	1 1/4-11	1 1/4-11

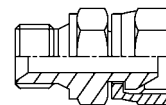
**Coude 90° BSP/BSP**

réf.	écrou de serrage BSP	écrou de serrage BSP
2913-04-04	1/4-19	1/4-19
2913-06-06	3/8-19	3/8-19
2913-08-08	1/2-14	1/2-14
2913-12-12	3/4-14	3/4-14
2913-16-16	1-11	1-11
2913-20-20	1 1/4-11	1 1/4-11



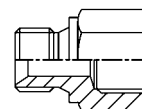
Mamelon de raccordement BSP/BSP

réf.	ext. BSP	écrou de serrage BSP
2243-02-02	1/8-28	1/8-28
2243-02-04	1/8-28	1/4-19
2243-04-04	1/4-19	1/4-19
2243-04-02	1/4-19	1/8-28
2243-04-06	1/4-19	3/8-19
2243-04-08	1/4-19	1/2-14
2243-06-06	3/8-19	3/8-19
2243-06-02	3/8-19	1/8-28
2243-06-04	3/8-19	1/4-19
2243-06-08	3/8-19	1/2-14
2243-08-08	1/2-14	1/2-14
2243-08-04	1/2-14	1/4-19
2243-08-06	1/2-14	3/8-19
2243-08-10	1/2-14	5/8-14
2243-08-12	1/2-14	3/4-14
2243-08-16	1/2-14	1-11
2243-10-10	5/8-14	5/8-14
2243-10-06	5/8-14	3/8-19
2243-10-08	5/8-14	1/2-14
2243-10-12	5/8-14	3/4-14
2243-12-12	3/4-14	3/4-14
2243-12-08	3/4-14	1/2-14
2243-12-10	3/4-14	5/8-14
2243-12-16	3/4-14	1-11
2243-12-20	3/4-14	1 1/4-11
2243-16-16	1-11	1-11
2243-16-08	1-11	1/2-14
2243-16-10	1-11	5/8-14
2243-16-12	1-11	3/4-14
2243-16-20	1-11	1 1/4-11
2243-20-20	1 1/4-11	1 1/4-11
2243-20-12	1 1/4-11	3/4-14
2243-20-16	1 1/4-11	1-11
2243-20-24	1 1/4-11	1 1/2-11
2243-24-24	1 1/2-11	1 1/2-11



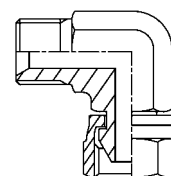
Adaptateur BSP/BSP

réf.	ext. BSP	int. BSP
2242-02-02	1/8-28	1/8-28
2242-04-04	1/4-19	1/4-19
2242-06-06	3/8-19	3/8-19
2242-08-08	1/2-14	1/2-14
2242-12-12	3/4-14	3/4-14
2242-16-16	1-11	1-11



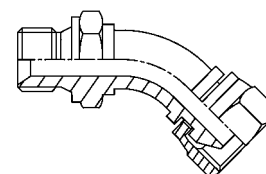
Coude 90° BSP/BSP

réf.	ext. BSP	écrou de serrage BSP
2643-04-04	1/4-19	1/4-19
2643-04-06	1/4-19	3/8-19
2643-06-06	3/8-19	3/8-19
2643-06-04	3/8-19	1/4-19
2643-08-06	1/2-14	3/8-19
2643-08-08	1/2-14	1/2-14
2643-10-08	5/8-14	1/2-14
2643-10-10	5/8-14	5/8-14
2643-12-08	3/4-14	1/2-14
2643-12-12	3/4-14	3/4-14
2643-16-12	1-11	3/4-14
2643-16-16	1-11	1-11



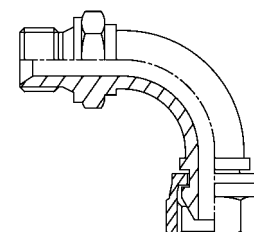
Coude 45° BSP/BSP

réf.	ext. BSP	écrou de serrage BSP
2843-04-04	1/4-19	1/4-19
2843-06-06	3/8-19	3/8-19
2843-08-08	1/2-14	1/2-14
2843-12-12	3/4-14	3/4-14
2843-16-16	1-11	1-11
2843-20-20	1 1/4-11	1 1/4-11



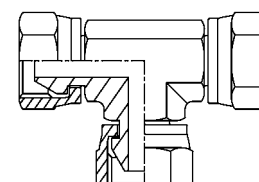
Coude 90° BSP/BSP

réf.	ext. BSP	int. BSP
2943-04-04	1/4-19	1/4-19
2943-06-06	3/8-19	3/8-19
2943-08-08	1/2-14	1/2-14
2943-12-12	3/4-14	3/4-14
2943-16-16	1-11	1-11
2943-20-20	1 1/4-11	1 1/4-11
2943-24-24	1 1/2-11	1 1/2-11
2943-32-32	2-11	2-11



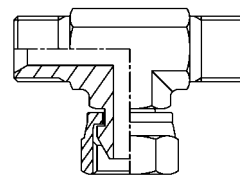
Té BSP/BSP

réf.	écrou de serrage BSP	écrou de serrage BSP	écrou de serrage BSP
2713-04-04	1/4-19	1/4-19	1/4-19
2713-06-06	3/8-19	3/8-19	3/8-19
2713-08-08	1/2-14	1/2-14	1/2-14
2713-10-10	5/8-14	5/8-14	5/8-14
2713-12-12	3/4-14	3/4-14	3/4-14
2713-16-16	1-11	1-11	1-11



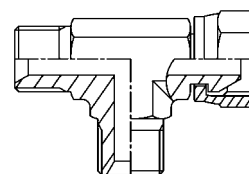
Té BSP/BSP

réf.	ext. BSP	écrou de serrage BSP	ext. BSP
2714-04-04	1/4-19	1/4-19	1/4-19
2714-06-06	3/8-19	3/8-19	3/8-19
2714-08-08	1/2-14	1/2-14	1/2-14
2714-10-10	5/8-14	5/8-14	5/8-14
2714-12-12	3/4-14	3/4-14	3/4-14
2714-16-16	1-11	1-11	1-11



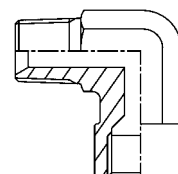
Té BSP/BSP

réf.	ext. BSP	ext. BSP	écrou de serrage BSP
2715-04-04	1/4-19	1/4-19	1/4-19
2715-06-06	3/8-19	3/8-19	3/8-19
2715-08-08	1/2-14	1/2-14	1/2-14
2715-10-10	5/8-14	5/8-14	5/8-14
2715-12-12	3/4-14	3/4-14	3/4-14
2715-16-16	1-11	1-11	1-11



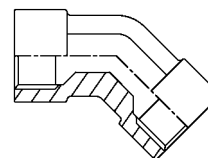
Coude 90° BSP/BSPT

réf.	ext. BSPT	int. BSP
8643-02-02	1/8-28	1/8-28
8643-04-04	1/4-19	1/4-19
8643-06-06	3/8-19	3/8-19
8643-08-08	1/2-14	1/2-14
8643-12-12	3/4-14	3/4-14
8643-16-16	1-11	1-11



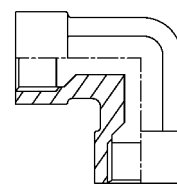
Coude 45° BSP/BSP

réf.	int. BSP	int. BSP
8444-02-02	1/8-28	1/8
8444-04-04	1/4-19	1/4
8444-06-06	3/8-19	3/8
8444-08-08	1/2-14	1/2
8444-12-12	3/4-14	3/4



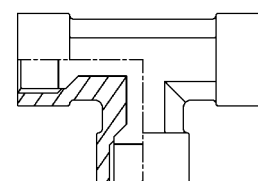
Coude 90° BSP/BSP

réf.	int. BSP	int. BSP
8644-02-02	1/8-28	1/8
8644-04-04	1/4-19	1/4
8644-06-06	3/8-19	3/8
8644-08-08	1/2-14	1/2
8644-12-12	3/4-14	3/4
8644-16-16	1-11	1
8644-20-20	1 1/4-11	1 1/4



Té BSP/BSP

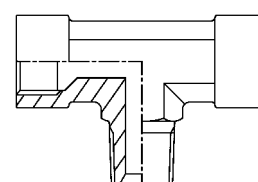
réf.	int. BSP	int. BSP	int. BSP
8744-02-02	1/8-28	1/8-28	1/8-28
8744-04-04	1/4-19	1/4-19	1/4-19
8744-06-06	3/8-19	3/8-19	3/8-19
8744-08-08	1/2-14	1/2-14	1/2-14
8744-12-12	3/4-14	3/4-14	3/4-14
8744-16-16	1-11	1-11	1-11
8744-20-20	1 1/4-11	1 1/4-11	1 1/4-11



3

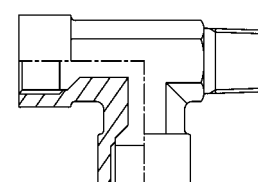
Té BSP/BSPT

réf.	int. BSP	ext. BSP	int. BSPT
8745-02-02	1/8-28	1/8-28	1/8-28
8745-04-04	1/4-19	1/4-19	1/4-19
8745-06-06	3/8-19	3/8-19	3/8-19
8745-08-08	1/2-14	1/2-14	1/2-14
8745-12-12	3/4-14	3/4-14	3/4-14
8745-16-16	1-11	1-11	1-11



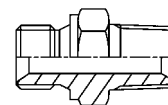
Té BSP/BSPT

réf.	int. BSP	int. BSP	ext. BSPT
8746-02-02	1/8-28	1/8-28	1/8-28
8746-04-04	1/4-19	1/4-19	1/4-19
8746-06-06	3/8-19	3/8-19	3/8-19
8746-08-08	1/2-14	1/2-14	1/2-14
8746-12-12	3/4-14	3/4-14	3/4-14
8746-16-16	1-11	1-11	1-11



Adaptateur BSP/NPTF

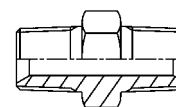
réf.	ext. BSP	ext. NPTF
2245-02-02	1/8-28	1/8-27
2245-04-04	1/4-19	1/4-18
2245-06-06	3/8-19	3/8-18
2245-08-08	1/2-14	1/2-14
2245-12-12	3/4-14	3/4-14
2245-16-16	1-11	1-11,5
2245-20-20	1 1/4-11	1 1/4-11,5
2245-24-24	1 1/2-11	1 1/2-11,5
2245-32-32	2-11	2-11,5
2245-02-04	1/8-28	1/4-18
2245-02-06	1/8-28	3/8-18
2245-02-08	1/8-28	1/2-14
2245-04-02	1/4-19	1/8-27
2245-04-06	1/4-19	3/8-18
2245-04-08	1/4-19	1/2-14
2245-06-02	3/8-19	1/8-27
2245-06-04	3/8-19	1/4-18
2245-06-08	3/8-19	1/2-14
2245-06-12	3/8-19	3/4-14
2245-08-02	1/2-14	1/8-27
2245-08-04	1/2-14	1/4-18
2245-08-06	1/2-14	3/8-18
2245-08-12	1/2-14	3/4-14
2245-08-16	1/2-14	1-11,5
2245-12-04	3/4-14	1/4-18
2245-12-06	3/4-14	3/8-18
2245-12-08	3/4-14	1/2-14
2245-12-16	3/4-14	1-11,5
2245-12-20	3/4-14	1 1/4-11,5
2245-16-06	1-11	3/8-18
2245-16-08	1-11	1/2-14
2245-16-12	1-11	3/4-14
2245-16-20	1-11	1 1/4-11,5
2245-16-24	1-11	1 1/2-11,5
2245-16-32	1-11	2-11,5
2245-20-12	1 1/4-11	3/4-14
2245-20-16	1 1/4-11	1-11,5
2245-20-24	1 1/4-11	1 1/2-11,5
2245-20-32	1 1/4-11	2-11,5
2245-24-16	1 1/2-11	1-11,5
2245-24-20	1 1/2-11	1 1/4-11,5
2245-24-32	1 1/2-11	2-11,5
2245-32-16	2-11	1-11,5
2245-32-20	2-11	1 1/4-11,5
2245-32-24	2-11	1 1/2-11,5



3

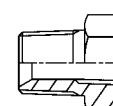
Adaptateur NPTF/NPTF

réf.	ext. NPTF	ext. NPTF
8255-02-02	1/8-27	1/8-27
8255-02-04	1/8-27	1/4-18
8255-02-06	1/8-27	3/8-18
8255-04-04	1/4-18	1/4-18
8255-04-06	1/4-18	3/8-18
8255-04-08	1/4-18	1/2-14
8255-06-06	3/8-18	3/8-18
8255-06-08	3/8-18	1/2-14
8255-08-08	1/2-14	1/2-14
8255-08-12	1/2-14	3/4-14
8255-12-12	3/4-14	3/4-14
8255-12-16	3/4-14	1-11,5
8255-16-16	1-11,5	1-11,5
8255-16-20	1-11,5	1 1/4-11,5
8255-20-20	1 1/4-11,5	1 1/4-11,5
8255-24-24	1 1/2-11,5	1 1/2-11,5
8255-24-32	1 1/2-11,5	2-11,5
8255-32-32	2-11,5	2-11,5

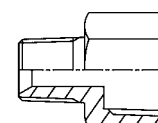


Adaptateur NPTF/NPTF

réf.	ext. NPTF	int. NPTF	type
8257-02-04	1/8-27	1/4-18	II
8257-02-08	1/8-27	1/2-14	II
8257-04-02	1/4-18	1/8-27	I
8257-04-06	1/4-18	3/8-18	II
8257-04-08	1/4-18	1/2-14	II
8257-04-12	1/4-18	3/4-14	II
8257-06-02	3/8-18	1/8-27	I
8257-06-04	3/8-18	1/4-18	II
8257-06-08	3/8-18	1/2-14	II
8257-08-02	1/2-14	1/8-27	I
8257-08-04	1/2-14	1/4-18	I
8257-08-06	1/2-14	3/8-18	II
8257-08-12	1/2-14	3/4-14	II
8257-08-16	1/2-14	1-11,5	II
8257-12-04	3/4-14	1/4-18	I
8257-12-06	3/4-14	3/8-18	I
8257-12-08	3/4-14	1/2-14	II
8257-12-16	3/4-14	1-11,5	II
8257-16-04	1-11,5	1/4-18	I
8257-16-06	1-11,5	3/8-18	I
8257-16-08	1-11,5	1/2-14	I
8257-16-12	1-11,5	3/4-14	II
8257-16-20	1-11,5	1 1/4-11,5	II
8257-20-12	1 1/4-11,5	3/4-14	I
8257-20-16	1 1/4-11,5	1-11,5	II
8257-20-24	1 1/4-11,5	1 1/2-11,5	II
8257-24-16	1 1/2-11,5	1-11,5	I
8257-24-20	1 1/2-11,5	1 1/4-11,5	II
8257-24-32	1 1/2-11,5	2-11,5	II
8257-32-16	2-11,5	1-11,5	I
8257-32-20	2-11,5	1 1/4-11,5	I
8257-32-24	2-11,5	1 1/2-11,5	I
8257-48-32	3-8	2-11,5	I



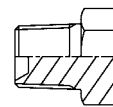
Type I



Type II

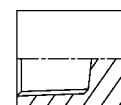
Bouchon NPTF

réf.	ext. NPTF
8150-02	1/8-27
8150-04	1/4-18
8150-06	3/8-18
8150-08	1/2-14
8150-12	3/4-14
8150-16	1-11,5
8150-20	1 1/4-11,5
8150-24	1 1/2-11,5
8150-32	2-11,5



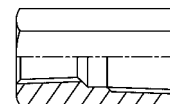
Capuchon NPTF

réf.	int. NPTF
8170-02	1/8-27
8170-04	1/4-18
8170-06	3/8-18
8170-08	1/2-14
8170-12	3/4-14
8170-16	1-11,5
8170-20	1 1/4-11,5
8170-24	1 1/2-11,5
8170-32	2-11,5



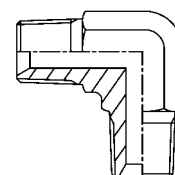
Manchon NPTF/NPTF

réf.	int. NPTF	int. NPTF
8277-02-02	1/8-27	1/8-27
8277-02-04	1/8-27	1/4-18
8277-02-06	1/8-27	3/8-18
8277-04-04	1/4-18	1/4-18
8277-04-06	1/4-18	3/8-18
8277-04-08	1/4-18	1/2-14
8277-06-06	3/8-18	3/8-18
8277-06-08	3/8-18	1/2-14
8277-08-08	1/2-14	1/2-14
8277-08-12	1/2-14	3/4-14
8277-12-12	3/4-14	3/4-14
8277-16-16	1-11,5	1-11,5
8277-20-20	1 1/4-11,5	1 1/4-11,5
8277-24-24	1 1/2-11,5	1 1/2-11,5
8277-32-32	2-11,5	2-11,5



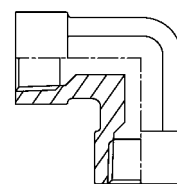
Coude 90° NPTF

réf.	ext. NPTF
8655-02-02	1/8-27
8655-04-04	1/4-18
8655-06-06	3/8-18
8655-08-08	1/2-14
8655-12-12	3/4-14
8655-16-16	1-11,5
8655-20-20	1 1/4-11,5



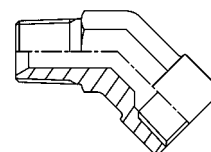
Coude 90° NPTF

réf.	int. NPTF	int. [mm]
8677-02-02	1/8-27	1/8-27
8677-04-04	1/4-18	1/4-18
8677-06-06	3/8-18	3/8-18
8677-08-08	1/2-14	1/2-14
8677-12-12	3/4-14	3/4-14
8677-16-16	1-11,5	1-11,5
8677-20-20	1 1/4-11,5	1 1/4-11,5
8677-24-24	1 1/2-11,5	1 1/2-11,5



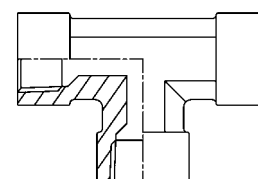
Coude 45° NPTF/NPTF

réf.	ext. NPTF	int. NPTF
8457-02-02	1/8-27	1/8-27
8457-04-04	1/4-18	1/4-18
8457-06-06	3/8-18	3/8-18
8457-08-08	1/2-14	1/2-14
8457-12-12	3/4-14	3/4-14
8457-16-16	1-11,5	1-11,5



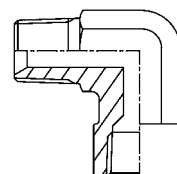
Té NPTF/NPTF

réf.	int. NPTF	int. NPTF	int. NPTF
8777-02-02	1/8-27	1/8-27	1/8-27
8777-04-04	1/4-18	1/4-18	1/4-18
8777-06-06	3/8-18	3/8-18	3/8-18
8777-08-08	1/2-14	1/2-14	1/2-14
8777-12-12	3/4-14	3/4-14	3/4-14
8777-16-16	1-11,5	1-11,5	1-11,5
8777-20-20	1 1/4-11,5	1 1/4-11,5	1 1/4-11,5
8777-24-24	1 1/2-11,5	1 1/2-11,5	1 1/2-11,5



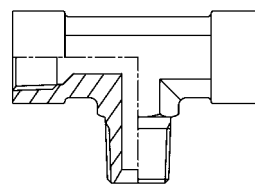
Coude 90° NPTF/NPTF

réf.	ext. NPTF	int. NPTF
8657-02-02	1/8-27	1/8-27
8657-04-04	1/4-18	1/4-18
8657-06-06	3/8-18	3/8-18
8657-08-08	1/2-14	1/2-14
8657-12-08	3/4-14	1/2-14
8657-12-12	3/4-14	3/4-14
8657-16-16	1-11,5	1-11,5
8657-20-20	1 1/4-11,5	1 1/4-11,5



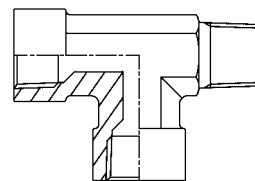
Té NPTF/NPTF

réf.	int. NPTF	ext. NPTF
8775-02-02	1/8-27	1/8-27
8775-04-04	1/4-18	1/4-18
8775-06-06	3/8-18	3/8-18
8775-08-08	1/2-14	1/2-14
8775-12-12	3/4-14	3/4-14



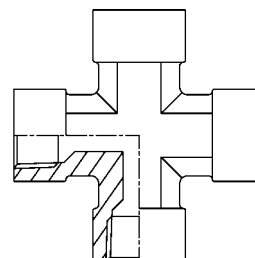
Té NPTF/NPTF

réf.	int. NPTF	ext. NPTF
8776-02-02	1/8-27	1/8-27
8776-04-04	1/4-18	1/4-18
8776-06-06	3/8-18	3/8-18
8776-08-08	1/2-14	1/2-14
8776-12-12	3/4-14	3/4-14



Croisillon NPTF

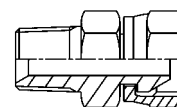
réf.	int. NPTF
8377-02-02	1/8-27
8377-04-04	1/4-18
8377-06-06	3/8-18
8377-08-08	1/2-14
8377-12-12	3/4-14
8377-16-16	1-11,5
8377-20-20	1 1/4-11,5



3

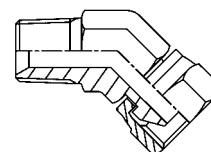
Mamelon de raccordement NPTF/NPSM

réf.	ext.	écrou de serrage
	NPTF	NPSM
2257-02-02	1/8-27	1/8
2257-02-04	1/8-27	1/4
2257-04-04	1/4-18	1/4
2257-06-04	3/8-18	1/4
2257-04-06	1/4-18	3/8
2257-06-06	3/8-18	3/8
2257-08-06	1/2-14	3/8
2257-04-08	1/4-18	1/2
2257-06-08	3/8-18	1/2
2257-08-08	1/2-14	1/2
2257-12-08	3/4-14	1/2
2257-08-12	1/2-14	3/4
2257-12-12	3/4-14	3/4
2257-16-12	1-11,5	3/4
2257-12-16	3/4-14	1
2257-16-16	1-11,5	1
2257-20-16	1 1/4-11,5	1
2257-16-20	1-11,5	1 1/4
2257-20-20	1 1/4-11,5	1 1/4
2257-24-24	1 1/2-11,5	1 1/2
2257-32-32	2-11,5	2



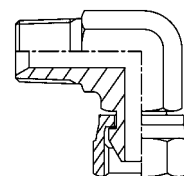
Coude 45° NPTF/NPSM

réf.	ext.	écrou de serrage
	NPTF	NPSM
2457-02-02	1/8-27	1/8
2457-02-04	1/8-27	1/4
2457-04-04	1/4-18	1/4
2457-06-06	3/8-18	3/8
2457-06-08	3/8-18	1/2
2457-08-06	1/2-14	3/8
2457-08-08	1/2-14	1/2
2457-08-12	1/2-14	3/4
2457-12-08	3/4-14	1/2
2457-12-12	3/4-14	3/4
2457-12-16	3/4-14	1
2457-16-12	1-11,5	3/4
2457-16-16	1-11,5	1
2457-20-20	1 1/4-11,5	1 1/4
2457-24-24	1 1/2-11,5	1 1/2
2457-32-32	2-11,5	2



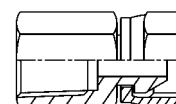
Coude 90° NPTF/NPSM

réf.	ext.	écrou de serrage
	NPTF	NPSM
2657-02-02	1/8-27	1/8
2657-04-04	1/4-18	1/4
2657-06-04	3/8-18	1/4
2657-04-06	1/4-18	3/8
2657-06-06	3/8-18	3/8
2657-08-06	1/2-14	3/8
2657-06-08	3/8-18	1/2
2657-08-08	1/2-14	1/2
2657-08-12	1/2-14	3/4
2657-12-06	3/4-14	3/8
2657-12-08	3/4-14	1/2
2657-12-12	3/4-14	3/4
2657-12-16	3/4-14	1
2657-16-12	1-11,5	3/4
2657-16-16	1-11,5	1
2657-20-20	1 1/4-11,5	1 1/4
2657-24-24	1 1/2-11,5	1 1/2
2657-32-32	2-11,5	2



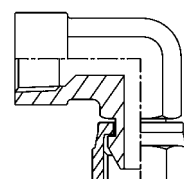
Mamelon de raccordement NPTF/NPSM

réf.	int.	écrou de serrage
	NPTF	NPSM
2277-02-02	1/8-27	1/8
2277-04-04	1/4-18	1/4
2277-06-06	3/8-18	3/8
2277-08-08	1/2-14	1/2
2277-12-12	3/4-14	3/4
2277-16-16	1-11,5	1
2277-20-20	1 1/4-11,5	1 1/4
2277-24-24	1 1/2-11,5	1 1/2
2277-32-32	2-11,5	2



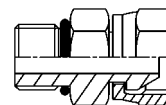
Coude 90° NPTF/NPSM

réf.	int.	écrou de serrage
	NPTF	NPSM
2677-02-02	1/8-27	1/8
2677-04-04	1/4-18	1/4
2677-06-06	3/8-18	3/8
2677-08-08	1/2-14	1/2
2677-12-12	3/4-14	3/4
2677-16-16	1-11,5	1
2677-20-20	1 1/4-11,5	1 1/4
2677-24-24	1 1/2-11,5	1 1/2



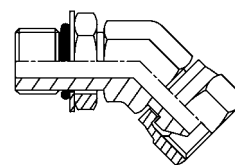
Mamelon de raccordement NPT/UNF

réf.	ext. UNF	écrou de serrage NPSM
8238-04-04	7/16-20	1/4
8238-06-04	9/16-18	1/4
8238-06-06	9/16-18	3/8
8238-08-06	3/4-16	3/8
8238-08-08	3/4-16	1/2
8238-10-08	7/8-14	1/2
8238-12-08	1 1/16-12	1/2
8238-12-12	1 1/16-12	3/4
8238-16-16	1 5/16-12	1
8238-20-20	1 5/8-12	1 1/4



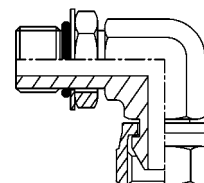
Coude 45° NPT/UNF

réf.	ext. UNF	écrou de serrage NPSM
8438-04-04	7/16-20	1/4
8438-06-06	9/16-18	3/8
8438-08-08	3/4-16	1/2
8438-10-08	7/8-14	1/2
8438-12-12	1 1/16-12	3/4
8438-16-16	1 5/16-12	1



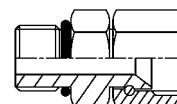
Coude 90° NPT/UNF

réf.	ext. UNF	écrou de serrage NPSM
8638-04-04	7/16-20	1/4
8638-06-04	9/16-18	1/4
8638-06-06	9/16-18	3/8
8638-08-06	3/4-16	3/8
8638-08-08	3/4-16	1/2
8638-10-08	7/8-14	1/2
8638-12-12	1 1/16-12	3/4
8638-16-16	1 5/16-12	1
8638-20-20	1 5/8-12	1 1/4



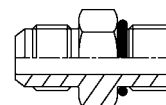
Mamelon de raccordement JIC/UNF

réf.	ext. UNF	écrou de serrage JIC
8242-04-04	7/16-20	7/16-20
8242-05-05	1/2-20	1/2-20
8242-06-06	9/16-18	9/16-18
8242-08-08	3/4-16	3/4-16
8242-10-10	7/8-14	7/8-14
8242-12-12	1 1/16-12	1 1/16-12
8242-16-16	1 5/16-12	1 5/16-12
8242-20-20	1 5/8-12	1 5/8-12



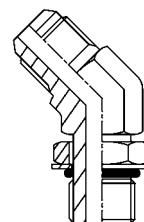
Mamelon de raccordement JIC/UNF

réf.	ext. JIC	ext. UNF	dia. tube [pouce]	dia. tube [mm]
8223-04-04	7/16-20	7/16-20	1/4	6
8223-04-05	7/16-20	1/2-20	1/4	6
8223-04-06	7/16-20	9/16-18	1/4	6
8223-05-05	1/2-20	1/2-20	5/16	8
8223-06-04	9/16-18	7/16-20	3/8	10
8223-06-06	9/16-18	9/16-18	3/8	10
8223-06-08	9/16-18	3/4-16	3/8	10
8223-08-06	3/4-16	9/16-18	1/2	12
8223-08-08	3/4-16	3/4-16	1/2	12
8223-08-10	3/4-14	7/8-14	1/2	12
8223-08-12	3/4-16	1 1/16-12	1/2	12
8223-10-08	7/8-14	3/4-16	5/8	14-15-16
8223-10-10	7/8-14	7/8-14	5/8	14-15-16
8223-10-12	7/8-14	1 1/16-12	5/8	14-15-16
8223-12-08	1 1/16-12	3/4-16	3/4	18-20
8223-12-10	1 1/16-12	7/8-14	3/4	18-20
8223-12-12	1 1/16-12	1 1/16-12	3/4	18-20
8223-12-16	1 1/16-12	1 5/16-12	3/4	18-20
8223-16-12	1 5/16-12	1 1/16-12	1	25
8223-16-16	1 5/16-12	1 5/16-12	1	25
8223-16-20	1 5/16-12	1 5/8-12	1	25
8223-20-20	1 5/8-12	1 5/8-12	1 1/4	30
8223-24-24	1 7/8-12	1 7/8-12	1 1/2	38



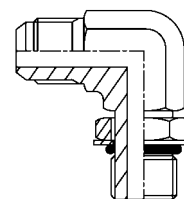
Coude 45° JIC/UNF

réf.	ext. JIC	ext. UNF	dia. tube [pouce]	dia. tube [mm]
8423-04-04	7/16-20	7/16-20	1/4	6
8423-05-05	1/2-20	1/2-20	5/16	8
8423-06-06	9/16-18	9/16-18	3/8	10
8423-06-08	9/16-18	3/4-16	3/8	10
8423-08-06	3/4-16	9/16-18	1/2	12
8423-08-08	3/4-16	3/4-16	1/2	12
8423-08-10	3/4-16	7/8-14	1/2	12
8423-10-08	7/8-14	3/4-16	5/8	16
8423-10-10	7/8-14	7/8-14	5/8	14-15-16
8423-12-10	1 1/16-12	7/8-14	3/4	18-20
8423-12-12	1 1/16-12	1 1/16-12	3/4	18-20
8423-16-16	1 5/16-12	1 5/16-12	1	25
8423-20-20	1 5/8-12	1 5/8-12	1 1/4	30-32
8423-24-24	1 7/8-12	1 7/8-12	1 1/2	38



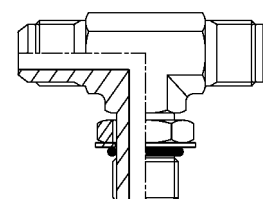
Coude 90° JIC/UNF

réf.	ext. JIC	ext. UNF	dia. tube [pouce]	dia. tube [mm]
8623-04-04	7/16-20	7/16-20	1/4	6
8623-04-06	7/16-20	9/16-18	1/4	6
8623-05-05	1/2-20	1/2-20	5/16	8
8623-06-04	9/16-18	7/16-20	3/8	10
8623-06-06	9/16-18	9/16-18	3/8	10
8623-06-08	9/16-18	3/4-16	3/8	10
8623-08-06	3/4-16	9/16-18	1/2	12
8623-08-08	3/4-16	3/4-16	1/2	12
8623-08-10	3/4-16	7/8-14	5/8	12
8623-10-08	7/8-14	3/4-16	5/8	14-15-16
8623-10-10	7/8-14	7/8-14	5/8	14-15-16
8623-12-10	1 1/16-12	7/8-14	3/4	18-20
8623-12-12	1 1/16-12	1 1/16-12	3/4	18-20
8623-16-12	1 5/16-12	1 1/16-12	1	25
8623-16-16	1 5/16-12	1 5/16-12	1	25
8623-16-20	1 5/16-12	1 5/8-12	1	25
8623-20-20	1 5/8-12	1 5/8-12	1 1/4	30-32
8623-24-24	1 7/8-12	1 7/8-12	1 1/2	38



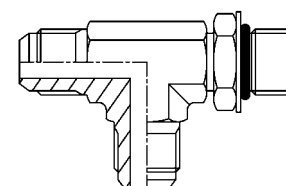
Té JIC/UNF

réf.	ext. JIC	ext. UNF	dia. tube [pouce]	dia. tube [mm]
2523-04-04	7/16-20	7/16-20	1/4	6
2523-05-05	1/2-20	1/2-20	5/16	8
2523-06-06	9/16-18	9/16-18	3/8	10
2523-08-08	3/4-16	3/4-16	1/2	12
2523-10-10	7/8-14	7/8-14	5/8	14-15-16
2523-12-12	1 1/16-12	1 1/16-12	3/4	18-20
2523-16-16	1 5/16-12	1 5/16-12	1	25



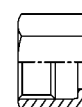
Té JIC/UNF

réf.	ext. JIC	ext. UNF	dia. tube [pouce]	dia. tube [mm]
2522-04-04	7/16-20	7/16-20	1/4	6
2522-05-05	1/2-20	1/2-20	5/16	8
2522-06-06	9/16-18	9/16-18	3/8	10
2522-08-08	3/4-16	3/4-16	1/2	12
2522-10-10	7/8-14	7/8-14	5/8	14-15-16
2522-12-12	1 1/16-12	1 1/16-12	3/4	18-20
2522-16-16	1 5/16-12	1 5/16-12	1	25



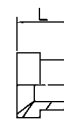
Ecrou JIC

réf.	int. JIC	dia. tube. [pouce]	dia. tube [mm]
8140-04	7/16-20	1/4	6
8140-05	1/2-20	5/16	8
8140-06	9/16-18	3/8	10
8140-08	3/4-16	1/2	12
8140-10	7/8-14	5/8	15
8140-12	1 1/16-12	3/4	18
8140-16	1 5/16-12	1	25
8140-20	1 5/8-12	1 1/4	30
8140-24	1 7/8-12	1 1/2	38



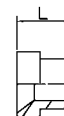
Bague de renforcement pouce

réf.	dia. tube [pouce]	L [mm]
8120-04	1/4	10
8120-05	5/16	11
8120-06	3/8	13
8120-08	1/2	14
8120-10	5/8	17
8120-12	3/4	17
8120-16	1	20
8120-20	1 1/4	23
8120-24	1 1/2	28



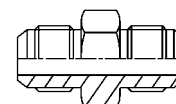
Bague de renforcement Métrique

réf.	dia. tube [mm]	L [mm]
8180-06	6	10
8180-08	8	11
8180-10	10	13
8180-12	12	14
8180-14	14	14
8180-15	15	14
8180-16	16	14
8180-18	18	14
8180-20	20	14
8180-25	25	20
8180-30	30	23
8180-32	32	23
8180-38	38	28



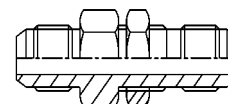
Mamelon double JIC/JIC

réf.	ext. JIC	dia. tube [pouce]	dia. tube [mm]
2222-04-04	7/16-20	1/4	6
2222-05-05	1/2-20	5/16	8
2222-06-06	9/16-18	3/8	10
2222-08-08	3/4-16	1/2	12
2222-10-10	7/8-14	5/8	14-15-16
2222-12-12	1 1/16-12	3/4	18-20
2222-16-16	1 5/16-12	1	25
2222-20-20	1 5/8-12	1 1/4	30-32
2222-24-24	1 7/8-12	1 1/2	38
2222-32-32	2 1/2-12	2	



Passe-cloison JIC/JIC

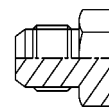
réf.	ext. JIC	dia. tube [pouce]	dia. tube [mm]
8226-04-04	7/16-20	1/4	6
8226-05-05	1/2-20	5/16	8
8226-06-06	9/16-18	3/8	10
8226-08-08	3/4-16	1/2	12
8226-10-10	7/8-14	5/8	14-15-16
8226-12-12	1 1/16-12	3/4	18-20
8226-16-16	1 5/16-12	1	25
8226-20-20	1 5/8-12	1 1/4	30-32
8226-24-24	1 7/8-12	1 1/2	38



Cloison maximale = 9,5 mm.

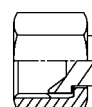
Bouchon JIC

réf.	ext. JIC	dia. tube [pouce]	dia. tube [mm]
2120-04	7/16-20	1/4	6
2120-05	1/2-20	5/16	8
2120-06	9/16-18	3/8	10
2120-08	3/4-16	1/2	12
2120-10	7/8-14	5/8	14-15-16
2120-12	1 1/16-12	3/4	18-20
2120-16	1 5/16-12	1	25
2120-20	1 5/8-12	1 1/4	30-32
2120-24	1 7/8-12	1 1/2	38



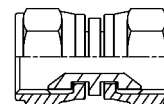
Blindkap JIC

réf.	écrou de serrage JIC	dia. tube [pouce]	dia. tube [mm]
2115-04	7/16-20	1/4	6
2115-05	1/2-20	5/16	8
2115-06	9/16-18	3/8	10
2115-08	3/4-16	1/2	12
2115-10	7/8-14	5/8	14-15-16
2115-12	1 1/16-12	3/4	18-20
2115-16	1 5/16-12	1	25
2115-20	1 5/8-12	1 1/4	30-32
2115-24	1 7/8-12	1 1/2	38

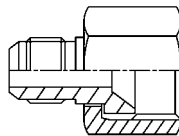


Mamelon de raccordement JIC

réf.	écrou de serrage JIC	écrou de serrage JIC
2215-04-04	7/16-20	7/16-20
2215-05-05	1/2-20	1/2-20
2215-06-04	9/16-18	7/16-20
2215-06-06	9/16-18	9/16-18
2215-08-06	3/4-16	9/16-18
2215-08-08	3/4-16	3/4-16
2215-12-05	1 1/16-12	1/2-20
2215-12-08	1 1/16-12	3/4-16
2215-12-10	1 1/16-12	7/8-14
2215-12-12	1 1/16-12	1 1/16-12
2215-16-16	1 5/16-12	1 5/16-12



Mamelon de réduction JIC/JIC

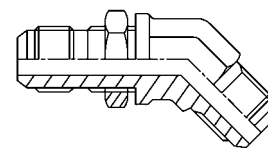


réf.	ext. JIC	int. JIC	dia. tube [pouce]	dia. tube [pouce]	dia. tube [mm]	dia. tube [mm]
8224-04-06	7/16-20	9/16-18	1/4	3/8	6	10
8224-05-06*	1/2-20	9/16-18	5/16	3/8	8	10
8224-04-08	7/16-20	3/4-16	1/4	1/2	6	12
8224-05-08	1/2-20	3/4-16	5/16	1/2	8	12
8224-06-08	9/16-18	3/4-16	3/8	1/2	10	12
8224-04-10	7/16-20	7/8-14	1/4	5/8	6	14-15-16
8224-06-10	9/16-18	7/8-14	3/8	5/8	10	14-15-16
8224-08-10	3/4-16	7/8-14	1/2	5/8	12	14-15-16
8224-04-12	7/16-20	1 1/16-12	1/4	3/4	6	18-20
8224-06-12	9/16-18	1 1/16-12	3/8	3/4	10	18-20
8224-08-12	3/4-16	1 1/16-12	1/2	3/4	12	18-20
8224-10-12	7/18-14	1 1/16-12	5/8	3/4	14-15-16	18-20
8224-12-16	1 1/16-12	1 5/16-12	3/4	1	18-20	25
8224-12-20	1 1/16-12	1 5/8-12	3/4	1 1/4	18-20	30-32
8224-16-20	5/16-12	1 5/8-12	1	1 1/4	25	30-32
8224-20-24	1 5/8-12	17/8-12	1 1/4	1 1/2	30-32	38

3

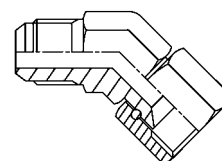
Passerelle coudée 45° JIC/JIC

réf.	ext. JIC	dia. tube [pouce]	dia. tube [mm]
8426-04-04	7/16-20	1/4	6
8426-06-06	9/16-18	3/8	10
8426-08-08	3/4-16	1/2	12
8426-10-10	7/8-14	5/8	14-15-16
8426-12-12	1 1/16-12	3/4	18-20
8426-16-16	1 5/16-12	1	25



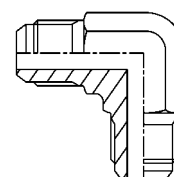
Coude 45° JIC/JIC

réf.	ext. JIC	écrou de serrage JIC	dia. tube [pouce]	dia. tube [mm]
8424-04-04	7/16-20	7/16-20	1/4	6
8424-05-05	1/2-20	1/2-20	5/16	8
8424-06-06	9/16-18	9/16-18	3/8	10
8424-08-08	3/4-16	3/4-16	1/2	12
8424-10-10	7/8-14	7/8-14	5/8	14-15-16
8424-12-12	1 1/16-12	1 1/16-12	3/4	18-20
8424-16-16	1 5/16-12	1 5/16-12	1	25
8424-20-20	1 5/8-12	1 5/8-12	1 1/4	30-32



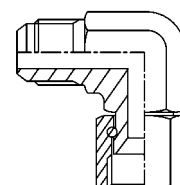
Coude 90° JIC/JIC

réf.	ext. JIC	dia. tube [pouce]	dia. tube [mm]
2622-04-04	7/16-20	1/4	6
2622-05-05	1/2-20	5/16	8
2622-06-06	9/16-18	3/8	10
2622-08-08	3/4-16	1/2	12
2622-10-10	7/8-14	5/8	14-15-16
2622-12-12	1 1/16-12	3/4	18-20
2622-16-16	1 5/16-12	1	25
2622-20-20	1 5/8-12	1 1/4	30-32
2622-24-24	1 7/8-12	1 1/2	38



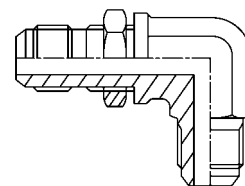
Coude 90° JIC/JIC

réf.	ext. JIC	écrou de serrage JIC	dia. tube [pouce]	dia. tube [mm]
8624-04-04	7/16-20	7/16-20	1/4	6
8624-05-05	1/2-20	1/2-20	5/16	8
8624-06-06	9/16-18	9/16-18	3/8	10
8624-08-08	3/4-16	3/4-16	1/2	12
8624-10-10	7/8-14	7/8-14	5/8	14-15-16
8624-12-12	1 1/16-12	1 1/16-12	3/4	18-20
8624-16-16	1 5/16-12	1 5/16-12	1	25
8624-20-20	1 5/8-12	1 5/8-12	1 1/4	30-32
8624-24-24	1 7/8-12	1 7/8-12	1 1/2	38



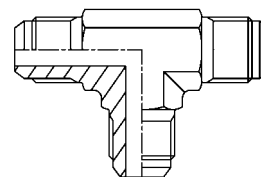
Passe-cloison coudé 90° JIC/JIC

réf.	ext. JIC	dia. tube [pouce]	dia. tube [mm]
8626-04-04	7/16-20	1/4	6
8626-05-05	1/2-20	5/16	8
8626-06-06	9/16-18	3/8	10
8626-08-08	3/4-16	1/2	12
8626-10-10	7/8-14	5/8	14-15-16
8626-12-12	1 1/16-12	3/4	18-20
8626-16-16	1 5/16-12	1	25
8626-20-20	1 5/8-12	1 1/4	30-32



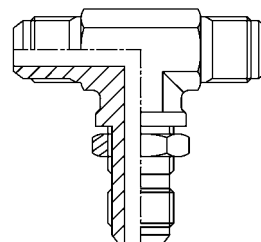
Té JIC/JIC

réf.	JIC	dia. tube [pouce]	dia. tube [mm]
2722-04-04	7/16-20	1/4	6
2722-05-05	1/2-20	5/16	8
2722-06-06	9/16-18	3/8	10
2722-08-08	3/4-16	1/2	12
2722-10-10	7/8-14	5/8	14-15-16
2722-12-12	1 1/16-12	3/4	18-20
2722-16-16	1 5/16-12	1	25
2722-20-20	1 5/8-12	1 1/4	30-32
2722-24-24	1 7/8-12	1 1/2	38



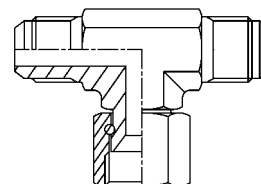
Passe-cloison en té JIC/JIC

réf.	ext. JIC	dia. tube [pouce]	dia. tube [mm]
8526-04-04	7/16-20	1/4	6
8526-06-06	9/16-18	3/8	10
8526-08-08	3/4-16	1/2	12
8526-10-10	7/8-14	5/8	14
8526-12-12	1 1/16-12	5/8	15



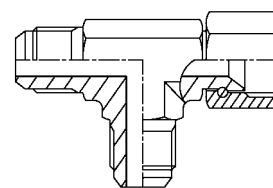
Té JIC/JIC

réf.	ext. JIC	écrou de serrage JIC	dia. tube [pouce]	dia. tube [mm]
2520-04-04	7/16-20	7/16-20	1/4	6
2520-06-06	9/16-18	9/16-18	3/8	10
2520-08-08	3/4-16	3/4-16	1/2	12
2520-10-10	7/8-14	7/8-14	5/8	14-15-16
2520-12-12	1 1/16-12	1 1/16-12	3/4	18-20
2520-16-16	1 5/16-12	1 5/16-12	1	25
2520-20-20	1 5/8-12	1 5/8-12	1 1/4	30-32



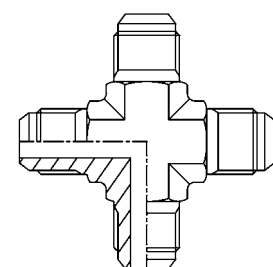
Té JIC/JIC

réf.	ext. JIC	écrou de serrage JIC	dia. tube [pouce]	dia. tube [mm]
2540-04-04	7/16-20	7/16-20	1/4	6
2540-06-06	9/16-18	9/16-18	3/8	10
2540-08-08	3/4-16	3/4-16	1/2	12
2540-10-10	7/8-14	7/8-14	5/8	14-15-16
2540-12-12	1 1/16-12	1 1/16-12	3/4	18-20
2540-16-16	1 5/16-12	1 5/16-12	1	25
2540-20-20	1 5/8-12	1 5/8-12	1 1/4	30-32



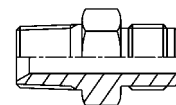
Croisillon JIC/JIC

réf.	JIC	dia. tube [pouce]	dia. tube [mm]
2720-04-04	7/16-20	1/4	6
2720-05-05	1/2-20	5/16	8
2720-06-06	9/16-18	3/8	10
2720-08-08	3/4-16	1/2	12
2720-10-10	7/8-14	5/8	14-15-16
2720-12-12	1 1/16-12	3/4	18-20



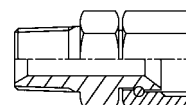
Mamelon de raccordement JIC/NPTF

réf.	dia. tube [pouce]	dia. tube [mm]	ext. NPTF	ext. JIC
2225-02-04	1/4	6	1/8	7/16-20
2225-04-04	1/4	6	1/4	7/16-20
2225-02-05	5/16	8	1/8	1/2-20
2225-04-05	5/16	8	1/4	1/2-20
2225-02-06	3/8	10	1/8	9/16-18
2225-04-06	3/8	10	1/4	9/16-18
2225-06-06	3/8	10	3/8	9/16-18
2225-08-06	3/8	10	1/2	9/16-18
2225-04-08	1/2	12	1/4	3/4-16
2225-06-08	1/2	12	3/8	3/4-16
2225-08-08	1/2	12	1/2	3/4-16
2225-12-08	1/2	12	3/4	3/4-16
2225-06-10	5/8	14	3/8	7/8-14
2225-12-10	5/8	14	3/4	7/8-14
2225-06-10	5/8	15	3/8	7/8-14
2225-08-10	5/8	15	1/2	7/8-14
2225-12-10	5/8	15	3/4	7/8-14
2225-06-10	5/8	16	3/8	7/8-14
2225-12-10	5/8	16	3/4	7/8-14
2225-08-12	3/4	18	1/2	1 1/16-12
2225-12-12	3/4	18-20	3/4	1 1/16-12
2225-16-12	3/4	18	1	1 1/16-12
2225-08-12	3/4	20	1/2	1 1/16-12
2225-16-12	3/4	20	1	1 1/16-12
2225-12-14	7/8	0	3/4	13/16-12
2225-12-16	1	25	3/4	1 5/16-12
2225-16-16	1	25	1	1 5/16-12
2225-16-20	1 1/4	30	1	1 5/8-12
2225-20-20	1 1/4	30	1 1/4	1 5/8-12
2225-16-20	1 1/4	32	1	1 5/8-12
2225-20-24	1 1/2	38	1 1/4	1 7/8-12
2225-24-24	1 1/2	38	1 1/2	1 7/8-12
2225-24-32	2		1 1/2	2 1/2-12
2225-32-32	2		2	2 1/2-12



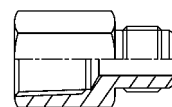
Mamelon de raccordement NPTF/JIC

réf.	ext. NPTF	écrou de serrage JIC
8254-02-04	1/8	7/16-20
8254-02-05	1/8	1/2-20
8254-04-04	1/4	7/16-20
8254-04-05	1/4	1/2-20
8254-04-06	1/4	9/16-18
8254-04-08	1/4	3/4-16
8254-06-06	3/8	9/16-18
8254-06-08	3/8	3/4-16
8254-06-10	3/8	7/8-14
8254-08-10	1/2	7/8-14
8254-08-12	1/2	1 1/16-12
8254-12-12	3/4	11/16
8254-12-16	3/4	15/16



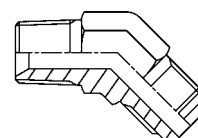
Mamelon de raccordement JIC/NPTF

réf.	int. NPTF	ext. JIC	dia. tube [mm]	dia. tube [mm]
8227-02-04	1/8	7/16-20	1/4	6
8227-04-04	1/4	7/16-20	1/4	6
8227-02-05	1/8	1/2-20	5/16	8
8227-04-05	1/4	1/2-20	5/16	8
8227-04-06	1/4	9/16-18	3/8	10
8227-06-06	3/8	9/16-18	3/8	10
8227-06-08	3/8	3/4-16	1/2	12
8227-08-08	1/2	3/4-16	1/2	12
8227-08-10	1/2	7/8-14	5/8	14-15-16
8227-08-12	1/2	1 1/16-12	3/4	18-20
8227-12-12	3/4	1 1/16-12	3/4	18-20
8227-16-16	1	1 5/16-12	1	25
8227-20-20	1 1/4	1 5/8-12	1 1/4	30-32
8227-24-24	1 1/2	1 7/8-12	1 1/2	38



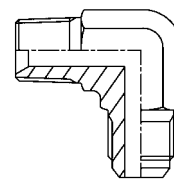
Coude 45° JIC/NPTF

réf.	ext. NPTF	ext. JIC	dia. tube [pouce]	dia. tube [mm]
2425-02-04	1/8	7/16-20	1/4	6
2425-04-04	1/4	7/16-20	1/4	6
2425-02-05	1/8	1/2-20	5/16	8
2425-04-05	1/4	1/2-20	5/16	8
2425-02-06	1/8	9/16-18	3/8	10
2425-04-06	1/4	9/16-18	3/8	10
2425-06-06	3/8	9/16-18	3/8	10
2425-08-06	1/2	9/16-18	3/8	10
2425-04-08	1/4	3/4-16	1/2	12
2425-06-08	3/8	3/4-16	1/2	12
2425-08-08	1/2	3/4-16	1/2	12
2425-12-08	3/4	3/4-16	1/2	12
2425-06-10	3/8	7/8-14	5/8	14-15-16
2425-08-10	1/2	7/8-14	5/8	14-15-16
2425-12-10	3/4	7/8-14	5/8	16
2425-08-12	1/2	1 1/16-12	3/4	18
2425-12-12	3/4	1 1/16-12	3/4	18-20
2425-08-12	1/2	1 1/16-12	3/4	20
2425-12-14	3/4	1 3/16-12	7/8	
2425-16-12	1	1 1/16-12	3/4	20
2425-12-16	3/4	1 5/16-12	1	25
2425-16-16	1	1 5/16-12	1	25
2425-16-20	1	1 5/8-12	1 1/4	30
2425-20-20	1 1/4	1 5/8-12	1 1/4	30-32
2425-24-24	1 1/2	1 7/8-12	1 1/2	38
2425-32-32	2	2 1/2-12	2	



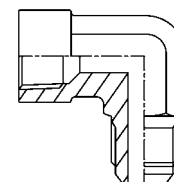
Coude 90° JIC/NPTF

réf.	ext. NPTF	ext. JIC	dia. tube [pouce]	dia. tube [mm]
2625-02-04	1/8	7/16-20	1/4	6
2625-04-04	1/4	7/16-20	1/4	6
2625-02-05	1/8	1/2-20	5/16	8
2625-04-05	1/4	1/2-20	5/16	8
2625-02-06	1/8	9/16-18	3/8	10
2625-04-06	1/4	9/16-18	3/8	10
2625-06-06	3/8	9/16-18	3/8	10
2625-08-06	1/2	9/16-18	3/8	10
2625-04-08	1/4	3/4-16	1/2	12
2625-06-08	3/8	3/4-16	1/2	12
2625-08-08	1/2	3/4-16	1/2	12
2625-12-08	3/4	3/4-16	1/2	12
2625-06-10	3/8	7/8-14	5/8	14-15-16
2625-08-10	1/2	7/8-12	5/8	14-15-16
2625-12-10	3/4	7/8-14	5/8	14-15-16
2625-12-12	3/4	1 1/16-12	3/4	20
2625-08-12	1/2	1 1/16-12	3/4	18-20
2625-16-12	1	1 1/16-12	3/4	20
2625-12-14	3/4	1 3/16-12	7/8	
2625-12-16	3/4	1 5/16-12	1	25
2625-16-16	1	1 5/16-12	1	25
2625-16-20	1	1 5/8-12	1 1/4	30-32
2625-20-20	1 1/4	1 5/8-12	1 1/4	30-32
2625-24-24	1 1/2	1 7/8-12	1 1/2	38
2625-32-32	2	2 1/2-12	2	



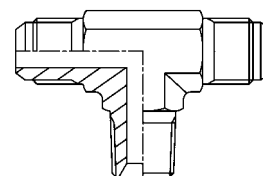
Coude 90° JIC/NPTF

réf.	int. NPTF	ext. JIC	dia. tube [pouce]	dia. tube [mm]
8627-02-04	1/8	7/16-20	1/4	6
8627-04-04	1/4	7/16-20	1/4	6
8627-02-05	1/8	1/2-20	5/16	8
8627-04-05	1/4	1/2-20	5/16	8
8627-02-06	1/8	9/16-18	3/8	10
8627-04-06	1/4	9/16-18	3/8	10
8627-06-06	3/8	9/16-18	3/8	10
8627-04-08	1/4	3/4-16	1/2	12
8627-06-08	3/8	3/4-16	1/2	12
8627-08-08	1/2	3/4-16	1/2	12
8627-08-10	1/2	7/8-14	5/8	14-15-16
8627-08-12	1/2	1 1/16-12	3/4	18-20
8627-12-12	3/4	1 1/16-12	3/4	18-20
8627-16-16	1	1 5/16-12	1	25
8627-20-20	1 1/4	1 5/8-12	1 1/4	30-32
8627-24-24	1 1/2	1 7/8-12	1 1/2	38



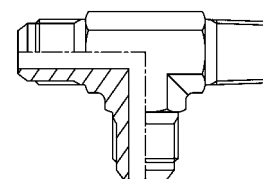
Té JIC/NPTF

réf.	ext. JIC	ext. NPTF	dia. tube [pouce]	dia. tube [mm]
2530-04-02	7/16-20	1/8	1/4	6
2530-05-02	1/2-20	1/8	5/16	8
2530-06-04	9/16-18	1/4	3/8	10
2530-08-06	3/4-16	3/8	1/2	12
2530-10-08	7/8-14	1/2	5/8	14-15-16
2530-12-12	1 1/16-12	3/4	3/4	18-20
2530-16-16	1 5/16-12	1	1	25
2530-20-20	1 5/8-12	1 1/4	1 1/4	30-32



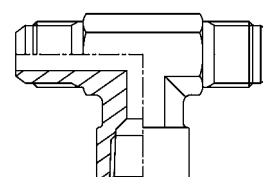
Té JIC/NPTF

réf.	ext. JIC	ext. NPTF	dia. tube [pouce]	dia. tube [mm]
2531-04-02	7/16-20	1/8	1/4	6
2531-05-02	1/2-20	1/8	5/16	8
2531-06-04	9/16-18	1/4	3/8	10
2531-08-06	3/4-16	3/8	1/2	12
2531-10-08	7/8-14	1/2	5/8	14-15-16
2531-12-12	1 1/16-12	3/4	3/4	18-20
2531-16-16	1 5/16-12	1	1	25
2531-20-20	1 5/8-12	1 1/4	1 1/4	30-32



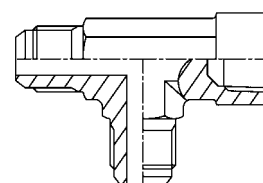
Té JIC/NPTF

réf.	ext. JIC	int. NPTF	dia. tube [pouce]	dia. tube [mm]
8727-04-02	7/16-20	1/8	1/4	6
8727-05-02	1/2-20	1/8	5/16	8
8727-06-04	9/16-18	1/4	3/8	10
8727-08-06	3/4-16	3/8	1/2	12
8727-10-08	7/8-14	1/2	5/8	14
8727-10-08	7/8-14	1/2	5/8	15
8727-10-08	7/8-14	1/2	5/8	16
8727-12-12	1 1/16-12	3/4	3/4	18
8727-12-12	1 1/16-12	3/4	3/4	20
8727-16-16	1 5/16-12	1	1	25
8727-20-20	1 5/8-12	1 1/4	1 1/4	30
8727-20-20	1 5/8-12	1 1/4	1 1/4	32
8727-24-24	1 7/8-12	1 1/2	1 1/2	38



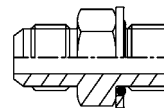
Té JIC/NPTF

réf.	ext. JIC	int. NPTF	dia. tube [pouce]	dia. tube [mm]
8728-06-04	9/16-18	1/4	3/8	10
8728-08-06	3/4-16	3/8	1/2	12
8728-10-08	7/8-14	1/2	5/8	14-15-16
8728-12-12	1 1/16-12	3/4	3/4	18-20
8728-16-16	1 5/16-12	1	1	25
8728-20-20	1 5/8-12	1 1/4	1 1/4	30-32



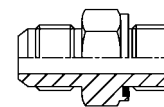
Mamelon de raccordement JIC/BSP

réf.	ext. JIC	ext. BSP	dia. tube [pouce]	dia. tube [mm]
2224-04-02	7/16-20	1/8	1/4	6
2224-04-04	7/16-20	1/4	1/4	6
2224-04-06	7/16-20	3/8	1/4	6
2224-04-08	7/16-20	1/2	1/4	6
2224-05-04	1/2-20	1/4	5/16	8
2224-05-06	1/2-20	3/8	5/16	8
2224-06-04	9/16-18	1/4	3/8	10
2224-06-06	9/16-18	3/8	3/8	10
2224-06-08	9/16-18	1/2	3/8	10
2224-08-04	3/4-16	1/4	1/2	12
2224-08-06	3/4-16	3/8	1/2	12
2224-08-08	3/4-16	1/2	1/2	12
2224-08-12	3/4-16	3/4	1/2	12
2224-10-06	7/8-14	3/8	5/8	14-15-16
2224-10-08	7/8-14	1/2	5/8	14-15-16
2224-12-08	1 1/16-12	1/2	3/4	18
2224-12-12	1 1/16-12	3/4	3/4	18-20
2224-12-16	1 1/16-12	1	3/4	18-20
2224-12-08	1 1/16-12	1/2	3/4	20
2224-16-12	1 5/16-12	3/4	1	25
2224-16-16	1 5/16-12	1	1	25
2224-16-20	1 5/16-12	1 1/4	1	25
2224-20-20	1 5/8-12	1 1/4	1 1/4	30-32
2224-24-20	1 7/8-12	1 1/4	1 1/2	38
2224-24-24	1 7/8-12	1 1/2	1 1/2	38



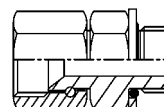
Adaptateur JIC/BSP(ED)

réf.	ext. JIC	ext. BSP(ED)	dia. tube [pouce]	dia. tube [mm]
2224-04-04ED	7/16-20	1/4-19	1/4	6
2224-06-04ED	9/16-18	1/4-19	3/8	10
2224-06-06ED	9/16-18	3/8-19	3/8	10
2224-08-08ED	3/4-16	1/2-14	1/2	12
2224-08-12ED	3/4-16	3/4-14	1/2	12
2224-12-08ED	1 1/16-12	1/2-14	3/4	18-20
2224-12-12ED	1 1/16-12	3/4-14	3/4	18-20
2224-12-16ED	1 1/16-12	1-11	1	25
2224-16-16ED	1 5/16-12	1-11	1	25



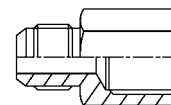
Mamelon de raccordement JIC/BSP

réf.	int. JIC	ext. BSP
8241-04-02	7/16-20	1/8
8241-05-04	1/2-20	1/4
8241-06-04	9/16-18	1/4
8241-06-06	9/16-18	3/8
8241-08-06	3/4-16	3/8
8241-10-08	7/8-14	1/2
8241-12-12	1 1/16-12	3/4
8241-16-16	1 5/16-12	1
8241-20-20	1 5/8-12	1 1/4
8241-24-24	1 7/8-12	1 1/2



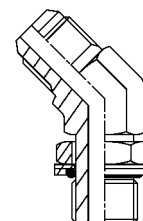
Mamelon de raccordement JIC/BSP

réf.	ext. JIC	int. BSP	dia. tube [pouce]	dia. tube [mm]
2221-04-02	7/16-20	1/8	1/4	6
2221-04-04	7/16-20	1/4	1/4	6
2221-05-02	1/2-20	1/8	5/16	8
2221-06-04	9/16-18	1/4	3/8	10
2221-06-06	9/16-18	3/8	3/8	10
2221-08-06	3/4-16	3/8	1/2	12
2221-08-08	3/4-16	1/2	1/2	12
2221-10-08	7/8-14	1/2	5/8	14-15-16
2221-12-12	1 1/16-12	3/4	3/4	18-20
2221-16-16	1 5/16-12	1	1	25



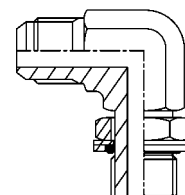
Coude 45° JIC/BSP

réf.	ext. JIC	ext. BSP	dia. tube [pouce]	dia. tube [mm]
2424-04-02	7/16-20	1/8	1/4	6
2424-06-04	9/16-18	1/4	3/8	10
2424-08-06	3/4-16	3/8	1/2	12
2424-10-08	7/8-14	1/2	5/8	14-15-16
2424-12-12	1 1/16-12	3/4	3/4	18-20
2424-16-16	1 5/16-12	1	1	25



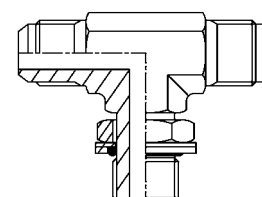
Coude 90° JIC/BSP

réf.	ext. JIC	ext. BSP	dia. tube [pouce]	dia. tube [mm]
2624-04-02	7/16-20	1/8	1/4	6
2624-04-04	7/16-20	1/4	1/4	6
2624-05-04	1/2-20	1/4	5/16	8
2624-06-04	9/16-18	1/4	3/8	10
2624-06-06	9/16-18	3/8	3/8	10
2624-08-04	3/4-16	1/4	1/2	12
2624-08-06	3/4-16	3/8	1/2	12
2624-08-08	3/4-16	1/2	1/2	12
2624-10-08	7/8-14	1/2	5/8	14-15-16
2624-12-08	1 1/16-12	1/2	3/4	18-20
2624-12-12	1 1/16-12	3/4	3/4	18-20
2624-16-12	1 5/16-12	3/4	1	25
2624-16-16	1 5/16-12	1	1	25
2624-20-16	1 5/8-12	1	1 1/4	30-32
2624-20-20	1 5/8-12	1 1/4	1 1/4	30-32
2624-24-24	1 7/8-12	1 1/2	1 1/2	38



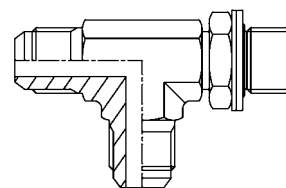
Té JIC/BSP

réf.	ext. JIC	ext. BSP	dia. tube [pouce]	dia. tube [mm]
2524-04-02	7/16-20	1/8	1/4	6
2524-06-04	9/16-18	1/4	3/8	10
2524-08-06	3/4-16	3/8	1/2	12
2524-10-08	7/8-14	1/2	5/8	14-15-16
2524-12-12	1 1/16-12	3/4	3/4	18-20



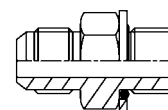
Té JIC/BSP

réf.	ext. JIC	ext. BSP	dia. tube [pouce]	dia. tube [mm]
2525-06-04	9/16-18	1/4	3/8	10
2525-08-06	3/4-16	3/8	1/2	12
2525-10-08	7/8-14	1/2	5/8	14-15-16
2525-12-12	1 1/16-12	3/4	3/4	18-20



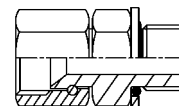
Mamelon de raccordement JIC/Métrique

réf.	ext. JIC	ext. métrique	dia. tube [pouce]	dia. tube [mm]
2226-04-10	7/16-20	M10 x 1	1/4	6
2226-05-12	1/2-20	M12 x 1,5	5/16	8
2226-06-14	9/16-18	M14 x 1,5	3/8	10
2226-08-16	3/4-16	M16 x 1,5	1/2	12
2226-08-18	3/4-16	M18 x 1,5	1/2	12
2226-10-18	7/8-14	M18 x 1,5	5/8	14-15-16
2226-10-22	7/8-14	M22 x 1,5	5/8	14-15-16
2226-12-22	1 1/16-12	M22 x 1,5	3/4	18-20
2226-12-27	1 1/16-12	M27 x 2	3/4	18-20
2226-16-33	1 5/16-12	M33 x 2	1	25
2226-20-42	1 5/8-12	M42 x 2	1 1/4	30-32
2226-24-50	1 7/8-12	M50 x 2	1 1/2	38



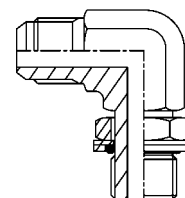
Mamelon de raccordement JIC/Métrique

réf.	int. JIC	ext. métrique
8249-04-10	7/16-20	M10 x 1
8249-05-12	1/2-20	M12 x 1,5
8249-06-14	9/16-18	M14 x 1,5
8249-08-16	3/4-16	M16 x 1,5
8249-10-22	7/8-14	M22 x 1,5
8249-12-27	1 1/16-12	M27 x 2
8249-16-33	1 5/16-12	M33 x 2
8249-20-42	1 5/8-12	M42 x 2
8249-24-50	1 7/8-12	M50 x 2



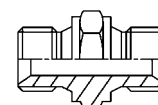
Coude 90° JIC/Métrique

réf.	JIC	métrique	dia. tube [pouce]	dia. tube [mm]
2626-04-10	7/16-20	M10 x 1	1/4	6
2626-05-12	1/2-20	M12 x 1,5	5/16	8
2626-06-14	9/16-18	M14 x 1,5	3/8	10
2626-08-16	3/4-16	M16 x 1,5	1/2	12
2626-10-18	7/8-14	M18 x 1,5	5/8	14-15-16
2626-10-22	7/8-14	M22 x 1,5	5/8	14-15-16
2626-10-18	7/8-14	M18 x 1,5	5/8	16
2626-10-22	7/8-14	M22 x 1,5	5/8	16
2626-12-22	1 1/16-12	M22 x 1,5	3/4	18-20
2626-12-27	1 1/16-12	M27 x 2	3/4	18-20
2626-16-33	1 5/16-12	M33 x 2	1	25
2626-20-42	1 5/8-12	M42 x 2	1 1/4	30-32



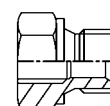
Mamelon double Métrique/BSP

réf.	ext. métrique	ext. BSP
2284-12-02	12 x 1,5	1/8-28
2284-12-04	12 x 1,5	1/4-19
2284-14-04	14 x 1,5	1/4-19
2284-14-06	14 x 1,5	3/8-19
2284-16-04	16 x 1,5	1/4-19
2284-16-06	16 x 1,5	3/8-19
2284-18-06	18 x 1,5	3/8-19
2284-18-08	18 x 1,5	1/2-14
2284-22-08	22 x 1,5	1/2-14
2284-26-08	26 x 1,5	1/2-14
2284-26-12	26 x 1,5	3/4-14
2284-30-12	30 x 1,5	3/4-14
2284-38-16	38 x 1,5	1-11

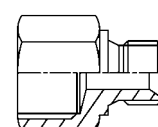


Réduction Métrique/BSP

réf.	int.	ext.	type
8246-04-14	1/4-19	M14x1,5	II
8246-04-18	1/4-19	M18 x 1,5	II
8246-06-18	3/8-19	M18 x 1,5	II
8246-08-18	1/2-14	M18 x 1,5	I
8246-08-22	1/2-14	M22 x 1,5	II
8246-14-08	1/2-14	M14 x 1,5	II
8246-18-04	M18 x 1,5	1/4-19	I
8246-18-06	M18 x 1,5	3/8-19	II
8246-18-08	M18 x 1,5	1/2-14	II
8246-18-12	M18 x 1,5	3/4-14	II
8246-22-08	M22 x 1,5	1/2-14	II



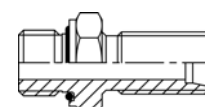
Type I



Type II

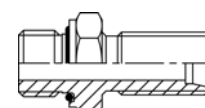
Passe-cloison BSP - Filet métrique léger

réf.	ext. BSP	métrique	dia. tube [mm]
8295-04-08L	1/4	M14 x 1,5	8
8295-04-10L	1/4	M16 x 1,5	10
8295-06-10L	3/8	M16 x 1,5	10
8295-06-12L	3/8	M18 x 1,5	12
8295-08-08L	1/2	M14 x 1,5	8
8295-08-12L	1/2	M18 x 1,5	12
8295-08-15L	1/2	M22 x 1,5	15
8295-08-18L	1/2	M26 x 1,5	18
8295-12-18L	3/4	M26 x 1,5	18
8295-12-22L	3/4	M30 x 2	22



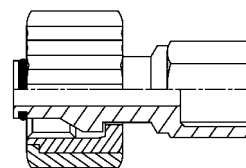
Passe-cloison BSP - Filet métrique lourd

réf.	ext. BSP	métrique	dia. tube [mm]
8296-04-08S	1/4	M16 x 1,5	8
8296-04-10S	1/4	M18 x 1,5	10
8296-06-10S	3/8	M18 x 1,5	10
8296-06-12S	3/8	M20 x 1,5	12
8296-08-08S	1/2	M16 x 1,5	8
8296-08-12S	1/2	M20 x 1,5	12
8296-08-16S	1/2	M24 x 1,5	16
8296-08-20S	1/2	M30 x 2,0	20
8296-12-20S	3/4	M30 x 2,0	20
8296-12-25S	3/4	M36 x 2,0	25



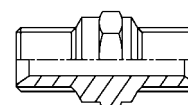
Raccord pour nettoyeurs haute pression Métrique/BSP

réf.	écrou métrique	int. BSP
2294-22-04	22 x 1,5	1/4-19
2294-22-06	22 x 1,5	3/8-19



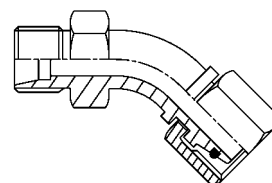
Mamelon de raccord pour nettoyeurs haute pression Métrique

réf.	ext. métrique	ext. métrique
2299-22-22	22 x 1,5	22 x 1,5



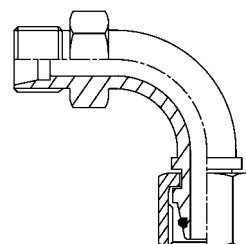
Coude 45° série S Métrique

réf.	tube cloison métrique	écrou de serrage métrique	dia. tube
2896-24-08	24 x 1,5	24 x 1,5	16S
2896-30-10	30 x 2,0	30 x 2,0	20S
2896-36-12	36 x 2,0	36 x 2,0	25S
2896-42-16	42 x 2,0	42 x 2,0	30S
2896-52-20	52 x 2,0	52 x 2,0	38S



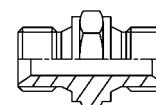
Coude 90° série S Métrique

réf.	tube cloison métrique	écrou de serrage métrique	dia. tube
2996-24-08	24 x 1,5	24 x 1,5	16S
2996-30-10	30 x 2,0	30 x 2,0	20S
2996-36-12	36 x 2,0	36 x 2,0	25S
2996-42-16	42 x 2,0	42 x 2,0	30S
2996-52-20	52 x 2,0	52 x 2,0	38S

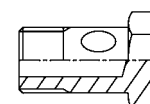


Mamelon double Métrique

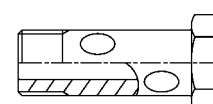
réf.	ext. métrique	ext. métrique
2288-10-10	10 x 1	10 x 1
2288-12-10	12 x 1,5	10 x 1
2288-12-12	12 x 1,5	12 x 1,5
2288-14-12	14 x 1,5	12 x 1,5
2288-14-14	14 x 1,5	14 x 1,5
2288-16-12	16 x 1,5	12 x 1,5
2288-16-14	16 x 1,5	14 x 1,5
2288-16-16	16 x 1,5	16 x 1,5
2288-18-16	18 x 1,5	16 x 1,5
2288-18-18	18 x 1,5	18 x 1,5
2288-22-18	22 x 1,5	18 x 1,5
2288-22-22	22 x 1,5	22 x 1,5
2288-26-22	26 x 1,5	22 x 1,5
2288-26-26	26 x 1,5	26 x 1,5
2288-30-30	30 x 1,5	30 x 1,5
2288-30-38	30 x 1,5	38 x 1,5
2288-38-38	38 x 1,5	38 x 1,5

**Boulon Banjo Simple Métrique**

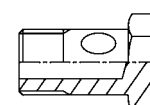
réf.	ext. métrique
2260-08-01	M08 x 1
2260-10-01	M10 x 1
2260-12-1.5	M12 x 1,5
2260-14-1.5	M14 x 1,5
2260-16-1.5	M16 x 1,5
2260-18-1.5	M18 x 1,5
2260-22-1.5	M22 x 1,5
2260-26-1.5	M26 x 1,5
2260-30-1.5	M30 x 1,5

**Boulon Banjo Double Métrique**

réf.	ext. métrique
2261-08-01	M08 x 1
2261-10-01	M10 x 1
2261-12-1.5	M12 x 1,5
2261-14-1.5	M14 x 1,5
2261-16-1.5	M16 x 1,5
2261-18-1.5	M18 x 1,5

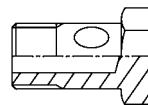
**Boulon Banjo Simple BSP**

réf.	ext. BSP
2262-02	1/8-28
2264-04	1/4-19
2262-06	3/8-19
2262-08	1/2-14



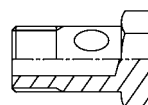
Boulon Banjo Simple Métrique - pour coupleur 10212

réf.	ext. métrique
2263-12-1.5	M12 x 1,5
2263-26-1.5	M26 x 1,5



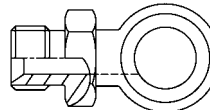
Boulon Banjo Simple BSP - pour coupleur 10212

réf.	ext. BSP
2264-04	1/4-19
2264-06	3/8-19
2264-08	1/2-14
2264-10	5/8-14
2264-12	3/4-14



Raccord Banjo Métrique

réf.	ext. métrique	oogdia. [mm]
2281-12-10	12 x 1,5	10
2281-14-12	14 x 1,5	12
2281-14-14	14 x 1,5	14
2281-16-14	16 x 1,5	14
2281-16-16	16 x 1,5	16
2281-18-16	18 x 1,5	16
2281-22-18	22 x 1,5	18
2281-22-22	22 x 1,5	22
2281-26-22	26 x 1,5	22
2281-30-26	30 x 1,5	26



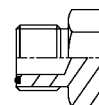
Ecrou ORFS

réf.	int. ORFS	dia. tube [mm]	dia. tube [pouce]
7140-04	9/16-18	6	1/4
7140-06	1 1/16-16	8	5/16
7140-06	1 1/16-16	10	3/8
7140-08	1 3/16-16	12	1/2
7140-10	1-14	14	
7140-10	1-14	15	
7140-10	1-14	16	5/8
7140-12	1 3/16-12	18	
7140-12	1 3/16-12	20	3/4
7140-16	1 7/16-12	22	
7140-16	1 7/16-12	25	1
7140-20	1 11/16-12	28	
7140-20	1 11/16-12	30	
7140-20	1 11/16-12	32	1 1/4
7140-24	2-12	35	
7140-24	2-12	38	1 1/2



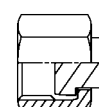
Bouchon ORFS

réf.	ext. ORFS	dia. tube [pouce]	dia. tube [mm]
7120-04	9/16-18	1/4	6
7120-06	11/16-16	3/8	8-10
7120-08	13/16-16	1/2	12
7120-10	1-14	5/8	14-16
7120-12	1 3/16-12	3/4	18-20
7120-16	1 7/16-12	1	22-25
7120-20	1 11/16-12	1 1/4	28-32
7120-24	2-12	1 1/2	35-38



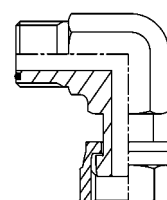
Capuchon ORFS

réf.	int. ORFS	dia. tube [pouce]	dia. tube [mm]
7115-04	9/16-18	1/4	6
7115-06	11/16-16	3/8	8-10
7115-08	13/16-16	1/2	12
7115-10	1-14	5/8	14-16
7115-12	1 3/16-12	3/4	18-20
7115-16	1 7/16-12	1	22-25
7115-20	1 11/16-12	1 1/4	28-32
7115-24	2-12	1 1/2	35-38



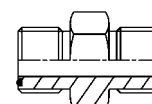
Coude ORFS

réf.	ext. ORFS	écrou de serrage ORFS	dia. tube [pouce]	dia. tube [mm]
7622-04-04	9/16-18	9/16-18	1/4	6
7622-06-06	11/16-16	11/16-16	3/8	8-10
7622-08-08	13/16-16	13/16-16	1/2	12
7622-10-10	1-14	1-14	5/8	14-16
7622-12-12	1 3/16-12	1 3/16-12	3/4	18-20
7622-16-16	1 7/16-12	1 7/16-12	1	22-25
7622-20-20	1 11/16-12	1 11/16-12	1 1/4	28-32
7622-24-24	2-12	2-12	1 1/2	35-38



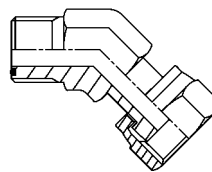
Mamelon double ORFS/ORFS

réf.	ext. ORFS	dia. tube [mm]	dia. tube [pouce]
7222-04-04	9/16-18	6	1/4
7222-06-06	11/16-16	8	5/16
7222-06-06	11/16-16	10	3/8
7222-08-08	13/16-16	12	1/2
7222-10-10	1-14	14-15-16	5/8
7222-12-12	1 3/16-12	18-20	3/4
7222-16-16	1 7/16-12	22-25	1
7222-20-20	1 11/16-12	28-30-32	1 1/4
7222-24-24	2-12	35-38	1 1/2



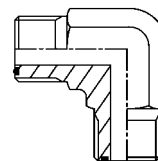
Adaptateur 45° ORFS/ORFS

réf.	ext. ORFS	écrou de serrage ORFS	dia. tube [mm]	dia. tube [pouce]
7422-04-04	9/16-18	9/16-18	6	1/4
7422-06-06	11/16-16	11/16-16	10	3/8
7422-08-08	13/16-16	13/16-16	12	1/2
7422-10-10	1-14	1-14	14-15-16	5/8
7422-12-12	1 3/16-12	1 3/16-12	18-20	3/4
7422-16-16	1 7/16-12	1 7/16-12	22-25	1
7422-20-20	1 11/16-12	1 11/16-12	28-30-32	1 1/4
7422-24-24	2-12	2-12	35-38	1 1/2



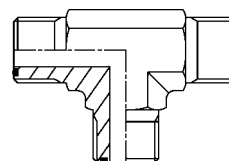
Adaptateur 90° ORFS/ORFS

réf.	ext. ORFS	ext. ORFS	dia. tube [mm]	dia. tube [pouce]
7922-04-04	9/16-18	9/16-18	6	1/4
7922-06-06	11/16-16	11/16-16	10	3/8
7922-08-08	13/16-16	13/16-16	12	1/2
7922-10-10	1-14	1-14	14-15-16	5/8
7922-12-12	1 3/16-12	1 3/16-12	18-20	3/4
7922-16-16	1 7/16-12	1 7/16-12	22-25	1



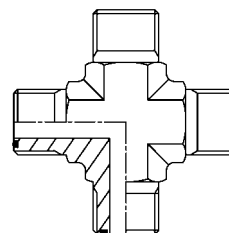
Té ORFS

réf.	ext. ORFS	dia. tube [pouce]	dia. tube [mm]
7722-04-04	9/16-18	1/4	6
7722-06-06	11/16-16	3/8	8-10
7722-08-08	13/16-16	1/2	12
7722-10-10	1-14	5/8	14-16
7722-12-12	1 3/16-12	3/4	18-20
7722-16-16	1 7/16-12	1	22-25
7722-20-20	1 11/16-12	1 1/4	28-32
7722-24-24	2-12	1 1/2	35-38



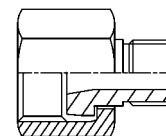
Croisillon ORFS

réf.	ext. ORFS	dia. tube [pouce]	dia. tube [mm]
7377-04-04	9/16-18	1/4	6
7377-06-06	11/16-16	3/8	8-10
7377-08-08	13/16-16	1/2	12
7377-10-10	1-14	5/8	14-16
7377-12-12	1 3/16-12	3/4	18-20
7377-16-16	1 7/16-12	1	22-25
7377-20-20	1 11/16-12	1 1/4	28-32
7377-24-24	2-12	1 1/2	35-38



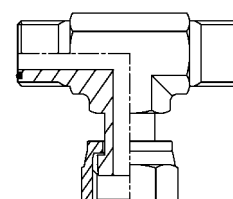
Réducteur ORFS/ORFS

réf.	int. ORFS	ext. ORFS
7274-08-04	13/16-16	9/16-18
7274-10-04	1-14	9/16-18
7274-10-08	1-14	1 3/16-16
7274-12-06	1 3/16-12	1 1/16-16
7274-12-08	1 3/16-12	1 3/16-16
7274-16-08	1 7/16-12	1 3/16-16
7274-16-10	1 7/16-12	1-14
7274-16-12	1 7/16-12	1 3/16-12
7274-20-12	1 11/16-12	1 3/16-12
7274-24-16	2-12	1 7/16-12
7274-24-20	2-12	1 11/16-12



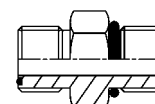
Té ORFS

réf.	ext. ORFS	écrou de serrage ORFS	dia. tube [pouce]	dia. tube [mm]
7520-04-04	9/16-18	9/16-18	1/4	6
7520-06-06	11/16-16	11/16-16	3/8	8-10
7520-08-08	13/16-16	13/16-16	1/2	12
7520-10-10	1-14	1-14	5/8	14-16
7520-12-12	1 3/16-12	1 3/16-12	3/4	18-20
7520-16-16	1 7/16-12	1 7/16-12	1	22-25
7520-20-20	1 11/16-12	1 11/16-12	1 1/4	28-32
7520-24-24	2-12	2-12	1 1/2	35-38



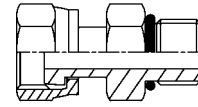
Mamelon de raccordement ORFS/UNF

réf.	ext. ORFS	ext. UNF	dia. tube [mm]	dia. tube [pouce]
7223-04-04	9/16-18	7/16-20	6	1/4
7223-04-06	9/16-18	9/16-18	6	1/4
7223-04-08	9/16-18	3/4-16	6	1/4
7223-06-06	11/16-16	9/16-18	8	5/16
7223-06-04	11/16-16	7/16-20	8	5/16
7223-06-08	11/16-16	3/4-16	8	5/16
7223-06-10	11/16-16	7/8-14	8	5/16
7223-06-06	11/16-16	9/16-18	10	3/8
7223-06-04	11/16-16	7/16-20	10	3/8
7223-06-08	11/16-16	3/4-16	10	3/8
7223-06-10	11/16-16	7/8-14	10	3/8
7223-08-08	13/16-16	3/4-16	12	1/2
7223-08-06	13/16-16	9/16-18	12	1/2
7223-08-10	13/16-16	7/8-14	12	1/2
7223-08-12	13/16-16	1 1/16-12	12	1/2
7223-08-16	13/16-16	1 5/16-12	12	1/2
7223-10-10	1-14	7/8-14	14-15-16	
7223-10-08	1-14	3/4-16	14-15-16	
7223-10-12	1-14	1 1/16-12	14-15-16	
7223-10-10	1-14	7/8-14	16	5/8
7223-12-12	1 3/16-12	1 1/16-12	18-20	
7223-12-08	1 3/16-12	3/4-16	18-20	
7223-12-10	1 3/16-12	7/8-14	18-20	
7223-12-16	1 3/16-12	1 5/16-12	18-20	
7223-16-16	1 7/16-12	1 5/16-12	22-25	
7223-16-12	1 7/16-12	1 1/16-12	22-25	
7223-16-20	1 7/16-12	1 5/8-12	22-25	
7223-20-20	1 11/16-12	1 5/8-12	28-30-32	
7223-20-16	1 11/16-12	1 5/16-12	28-30-32	
7223-20-24	1 11/16-12	1 7/8-12	28-30-32	
7223-24-24	2-12	1 7/8-12	35-38	
7223-24-20	2-12	1 5/8-12	35-38	



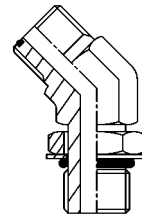
Adaptateur ORFS/UNF

réf.	écrou de serrage ORFS	ext. UNF
7273-04-04	9/16-18	7/16-20
7273-06-06	1 1/16-16	9/16-18
7273-08-08	1 3/16-16	3/4-16
7273-10-10	1-14	7/8-14
7273-12-12	1 3/16-12	1 1/16-12
7273-16-16	1 7/16-12	1 5/16-12
7273-20-20	1 11/16-12	1 5/8-12
7273-24-24	1 7/8-12	1 7/8-12



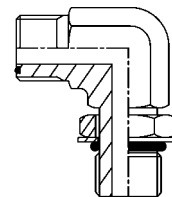
Adaptateur 45° ORFS/UNF

réf.	ext. ORFS	ext. UNF	dia. tube [pouce]	dia. tube [mm]
7423-04-04	9/16-18	7/16-20	1/4	6
7423-06-06	11/16-16	9/16-18	5/16	8
7423-08-08	13/16-16	3/4-16	1/2	12
7423-12-12	1 3/16-12	1 1/16-12	3/4	18-20
7423-16-16	1 7/16-12	1 5/16-12	1	22-25
7423-20-20	1 11/16-12	1 5/8-12	1 1/4	28-30-32
7423-24-24	1 7/8-12	1 7/8-12	1 1/2	35-38



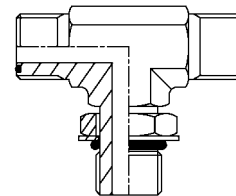
Adaptateur 90° ORFS/UNF

réf.	ext. ORFS	ext. UNF	dia. tube [pouce]	dia. tube [mm]
7623-04-06	9/16-18	9/16-18	1/4	6
7623-06-06	11/16-16	9/16-18	5/16	8
7623-08-06	13/16-16	9/16-18	1/2	12
7623-08-08	13/16-16	3/4-16	1/2	12
7623-10-10	1-14	7/8-14	5/8	16
7623-12-12	1 3/16-12	1 1/16-12	3/4	18-20
7623-16-16	1 7/16-12	1 5/16-12	1	22-25
7623-20-20	1 11/16-12	1 5/8-12	1 1/4	28-30-32
7623-24-24	2-12	1 7/8-12	1 1/2	35-38



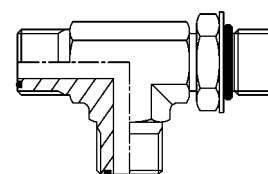
Té ORFS/UNF

réf.	ext. ORFS	ext. UNF	dia. tube [pouce]	dia. tube [mm]
7522-04-04	9/16-18	7/16-20	1/4	6
7522-06-06	11/16-16	9/16-18	5/16	8
7522-08-08	13/16-16	3/4-16	1/2	12
7522-10-10	1-14	7/8-14	5/8	16
7522-12-12	1 3/16-12	1 1/16-12	3/4	18-20
7522-16-16	1 7/16-12	1 5/16-12	1	22-25
7522-20-20	1 11/16-12	1 5/8-12	1 1/4	28-30-32



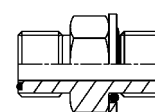
Té ORFS/UNF

réf.	ext. ORFS	ext. UNF	dia. tube [pouce]	dia. tube [mm]
7523-04-04	9/16-18	7/16-20	1/4	6
7523-06-06	11/16-16	9/16-18	5/16	8
7523-08-08	13/16-16	3/4-16	1/2	12
7523-10-10	1-14	7/8-14	5/8	16
7523-12-12	1 3/16-12	1 1/16-12	3/4	18-20
7523-16-16	1 7/16-12	1 5/16-12	1	22-25
7523-20-20	1 11/16-12	1 5/8-12	1 1/4	28-30-32
7523-24-24	2-12	1 7/8-12	1 1/2	35-38



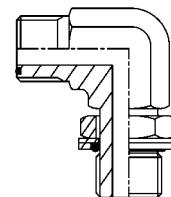
Mamelon de raccordement ORFS/BSP

réf.	ext. ORFS	ext. BSP	dia. tube [mm]	dia. tube [pouce]
7224-04-02	9/16-18	1/8	6	1/4
7224-04-04	9/16-18	1/4	6	1/4
7224-04-06	9/16-18	3/8	6	1/4
7224-04-08	9/16-18	1/2	6	1/4
7224-06-02	11/16-16	1/8	8	5/16
7224-06-04	11/16-16	1/4	8	5/16
7224-06-06	11/16-16	3/8	8	5/16
7224-06-08	11/16-16	1/2	8	5/16
7224-06-12	11/16-16	3/4	8	5/16
7224-06-02	11/16-16	1/8	10	3/8
7224-06-04	11/16-16	1/4	10	3/8
7224-06-06	11/16-16	3/8	10	3/8
7224-06-08	11/16-16	1/2	10	3/8
7224-06-12	11/16-16	3/4	10	3/8
7224-08-04	13/16-16	1/4	12	1/2
7224-08-06	13/16-16	3/8	12	1/2
7224-08-08	13/16-16	1/2	12	1/2
7224-08-12	13/16-16	3/4	12	1/2
7224-10-06	1-14	3/8	14-15-16	5/8
7224-10-08	1-14	1/2	14-15-16	5/8
7224-10-12	1-14	3/4	14-15-16	5/8
7224-10-16	1-14	1	14-15-16	5/8
7224-12-08	1 3/16-12	1/2	18-20	3/4
7224-12-12	1 3/16-12	3/4	18-20	3/4
7224-12-16	1 3/16-12	1	18-20	3/4
7224-12-20	1 3/16-12	1 1/4	18-20	3/4
7224-16-12	1 7/16-12	3/4	22-25	1
7224-16-16	1 7/16-12	1	22-25	1
7224-16-20	1 7/16-12	1 1/4	22-25	1
7224-16-24	1 7/16-12	1 1/2	22-25	1
7224-20-16	1 11/16-12	1	28-30-32	1 1/4
7224-20-20	1 11/16-12	1 1/4	28-30-32	1 1/4
7224-20-24	1 11/16-12	1 1/2	28-30-32	1 1/4



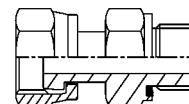
Coude 90° ORFS/BSP

réf.	ext. ORFS	ext. BSP	dia. tube [mm]	dia. tube [pouce]
7624-04-02	9/16-18	1/8	6	1/4
7624-04-04	9/16-18	1/4	6	1/4
7624-04-06	9/16-18	3/8	6	1/4
7624-06-04	11/16-16	1/4	8	5/16
7624-06-06	11/16-16	3/8	8	5/16
7624-06-08	11/16-16	1/2	8	5/16
7624-06-04	11/16-16	1/4	10	3/8
7624-06-06	11/16-16	3/8	10	3/8
7624-06-08	11/16-16	1/2	10	3/8
7624-08-04	13/16-16	1/4	12	1/2
7624-08-06	13/16-16	3/8	12	1/2
7624-08-08	13/16-16	1/2	12	1/2
7624-08-12	13/16-16	3/4	12	1/2
7624-10-06	1-14	3/8	14-15-16	5/8
7624-10-08	1-14	1/2	14-15-16	5/8
7624-10-12	1-14	3/4	14-15-16	5/8
7624-10-16	1-14	1	14-15-16	5/8
7624-12-08	1 3/16-12	1/2	18-20	3/4
7624-12-12	1 3/16-12	3/4	18-20	3/4
7624-12-16	1 3/16-12	1	18-20	3/4
7624-16-12	1 7/16-12	3/4	22-25	1
7624-16-16	1 7/16-12	1	22-25	1
7624-16-20	1 7/16-12	1 1/4	22-25	1
7624-20-16	1 11/16-12	1	28-30-32	1 1/4
7624-20-20	1 11/16-12	1 1/4	28-30-32	1 1/4
7624-20-24	1 11/16-12	1 1/2	28-30-32	1 1/4



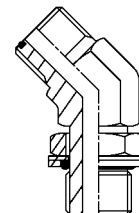
Adaptateur ORFS/BSP

réf.	écrou de serrage ORFS	ext. BSP
7241-04-04	9/16-18	1/4-19
7241-06-04	11/16-16	1/4-19
7241-06-06	11/16-16	3/8-19
7241-08-06	13/16-16	3/8-19
7241-08-08	13/16-16	1/2-14
7241-10-08	1-14	1/2-14
7241-12-12	1 3/16-12	3/4-14
7241-16-16	1 7/16-12	1-11
7241-20-16	1 11/16-12	1-11
7241-20-20	1 11/16-12	1 1/4-11



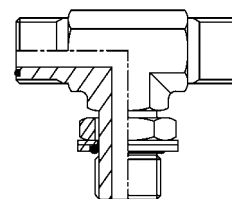
Adaptateur 45° ORFS/BSP

réf.	ext. ORFS	ext. BSP	dia. tube [pouce]	dia. tube [mm]
7424-04-04	9/16-18	1/4-19	1/4	6
7424-06-06	11/16-16	3/8-19	5/16	8-10
7424-08-08	13/16-16	1/2-14	1/2	12
7424-10-08	1-14	1/2-14	5/8	14-15-16
7424-10-10	1-14	5/8-14	5/8	14-15-16
7424-10-12	1-14	3/4-14	5/8	14-15-16
7424-12-12	1 3/16-12	3/4-14	3/4	18-20
7424-16-16	1 7/16-12	1-11	1	22-25
7424-20-20	1 11/16-12	1 1/4-11	1 1/4	28-30-32
7424-24-24	2-12	1 1/2-11	1 1/2	35-38



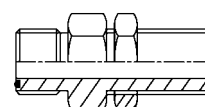
Té ORFS/BSP

réf.	ext. ORFS	ext. BSP	dia. tube [pouce]	dia. tube [mm]
7524-04-02	9/16-18	1/8-28		
7524-04-04	9/16-18	1/4-19	1/4	6
7524-06-04	11/16-16	1/4-19	5/16	8
7524-06-06	11/16-16	3/8-19	5/16	8-10
7524-08-06	13/16-16	3/8-19	1/2	12
7524-08-08	13/16-16	1/2-14	5/8	14-15-16
7524-10-08	1-14	1/2-14	5/8	14-15-16
7524-10-12	1-14	3/4-14	5/8	14-15-16
7524-12-12	1 3/16-12	3/4-14	3/4	18-20
7524-16-16	1 7/16-12	1-11	1	22-25
7524-20-20	1 11/16-12	1 1/4-11	1 1/4	28-30-32
7524-24-24	2-12	1 1/2-11	1 1/2	35-38



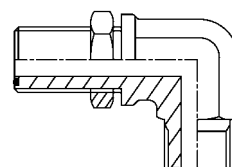
Passe-cloison ORFS

réf.	ext. ORFS	dia. tube [pouce]	dia. tube [mm]
7248-04-04	9/16-18	1/4	6
7248-06-06	11/16-16	3/8	8-10
7248-08-08	13/16-16	1/2	12
7248-10-10	1-14	5/8	14-16
7248-12-12	1 3/16-12	3/4	18-20
7248-16-16	1 7/16-12	1	22-25
7248-20-20	1 11/16-12	1 1/4	28-32
7248-24-24	2-12	1 1/2	35-38



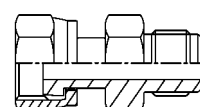
Passe-cloison 90° ORFS/ORFS

réf.	ext. ORFS	ext. ORFS	dia. tube [pouce]	dia. tube [mm]
7648-04-04	9/16-18	9/16-18	1/4	6
7648-06-06	11/16-16	11/16-16	3/8	8-10
7648-08-08	13/16-16	13/16-16	1/2	12
7648-10-10	1-14	1-14	5/8	14-16
7648-12-12	1 3/16-12	1 3/16-12	3/4	18-20
7648-16-16	1 7/16-12	1 7/16-12	1	22-25
7648-20-20	1 11/16-12	1 11/16-12	1 1/4	28-32
7648-24-24	2-12	2-12	1 1/2	35-38



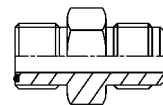
Réduction ORFS / JIC

réf.	écrou de serrage ORFS	ext. JIC	dia. tube [pouce]	dia. tube [mm]
72225-04-04	9/16-18	7/16-20	1/4	6
72225-06-06	11/16-16	9/16-18	3/8	8-10
72225-08-08	13/16-16	3/4-16	1/2	12
72225-10-10	1-14	7/8-14	5/8	14-16
72225-12-12	1 3/16-12	1 1/16-12	3/4	18-20
72225-16-16	1 7/16-12	1 5/16-12	1	22-25
72225-20-20	1 11/16-12	1 5/8-12	1 1/4	28-32
72225-24-24	2-12	1 7/8-12	1 1/2	35-38



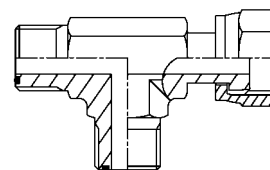
Adaptateur ORFS/JIC

réf.	ext. ORFS	ext. JIC
7227-04-04	9/16-18	7/16-20
7227-06-06	11/16-16	9/16-18
7227-08-08	13/16-16	3/4-16
7227-10-10	1-14	7/8-14
7227-12-12	1 3/16-12	1 1/16-12
7227-16-16	1 7/16-12	1 5/16-12



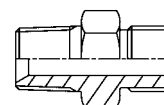
Té ORFS

réf.	ext. ORFS	écrou de serrage ORFS	dia. tube [pouce]	dia. tube [mm]
75925-04-04	9/16-18	9/16-18	1/4	6
75925-06-06	11/16-16	11/16-16	3/8	8-10
75925-08-08	13/16-16	13/16-16	1/2	12
75925-10-10	1-14	1-14	5/8	14-16
75925-12-12	1 3/16-12	1 3/16-12	3/4	18-20
75925-16-16	1 7/16-12	1 7/16-12	1	22-25
75925-20-20	1 11/16-12	1 11/16-12	1 1/4	28-32
75925-24-24	2-12	2-12	1 1/2	35-38



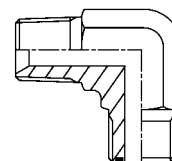
Adaptateur NPT/ORFS

réf.	ext. NPT	ext. ORFS	dia. tube [pouce]	dia. tube [mm]
7225-04-06	1/4-18	11/16-16	1/4	6
7225-06-06	3/8-18	11/16-16	5/16	8
7225-08-06	1/2-14	11/16-16	1/2	12
7225-08-08	1/2-14	13/16-16	1/2	12
7225-08-10	1/2-14	1-14		
7225-12-10	3/4-14	1-14		
7225-12-12	3/4-14	1 3/16-12	3/4	18-20
7225-12-16	3/4-14	1 7/16-12	3/4	18-20
7225-16-12	1-11,5	1 3/16-12	1	22-25
7225-16-16	1-11,5	1 7/16-12	1	22-25



Adaptateur 90° NPT/ORFS

réf.	ext. NPT	ext. ORFS	dia. tube [pouce]	dia. tube [mm]
7625-04-04	1/4-18	9/16-18	1/4	6
7625-06-06	3/8-18	11/16-16	5/16	8
7625-08-08	1/2-14	13/16-16	1/2	12
7625-08-10	1/2-14	1-14		
7625-12-12	3/4-14	1 3/16-12	3/4	18-20
7625-16-12	1-11,5	1 3/16-12	1	22-25
7625-16-16	1-11,5	1 7/16-12	1	22-25



Adaptateur ORFS/Métrique

réf.	ext. ORFS	ext. métrique	dia. tube [pouce]	dia. tube [mm]
7226-04-12	9/16-18	M12 x 1,5		
7226-04-14	9/16-18	M14 x 1,5		
7226-06-16	11/16-16	M16 x 1,5		
7226-08-18	13/16-16	M18 x 1,5		
7226-10-22	1-14	M22 x 1,5		
7226-12-27	1 3/16-12	M27 x 2		
7226-16-33	1 7/16-12	M33 x 2		
7226-20-42	1 11/16-12	M42 x 2		

